

# Experience



the Hi-Lite Advantage

Aluminum Wall Forming System



## ALUMINUM WALLFORMS

Introduction _____	3		
Why Aluminum ? _____	4	Design Details	
Features & Benefits _____	5	2.4M/8FT-Design Details _____	15
		3.0M/10FT-Design Details _____	18
Product Information		3.6M/12FT-Design Details _____	21
• Aluminum Gang Wallform Systems _____	6	4.2M/14FT-Design Details _____	24
• System Components _____	8	4.8M/16FT-Design Details _____	27
• Strongbacks/Wailers _____	9	Strongback – 140mm / FLTC _____	30
• Core Wallform System _____	10	Strongback – 152mm / FFTC _____	31
• Aluminum Push-Pull Props _____	11	Parts & Components _____	A1
• Catwalk Brackets & Lifting Brackets _____	12		
• Aluminum Beams _____	13		
• Beam Clips & T-Bolts _____	14		

The Aluminum Wall Forming System is primarily a hand-set system. It can also be handled with a crane, and may also be used quite successfully as a rolling or a flying system. (Consult with Hi-Lite Engineering for design)

This manual is published primarily for our customers, shoring designers and erectors this aluminum shoring system. It is intended *only as a guide* and should be used in conjunction with “generally accepted shoring design and safety regulations” in effect within the area and country of use.

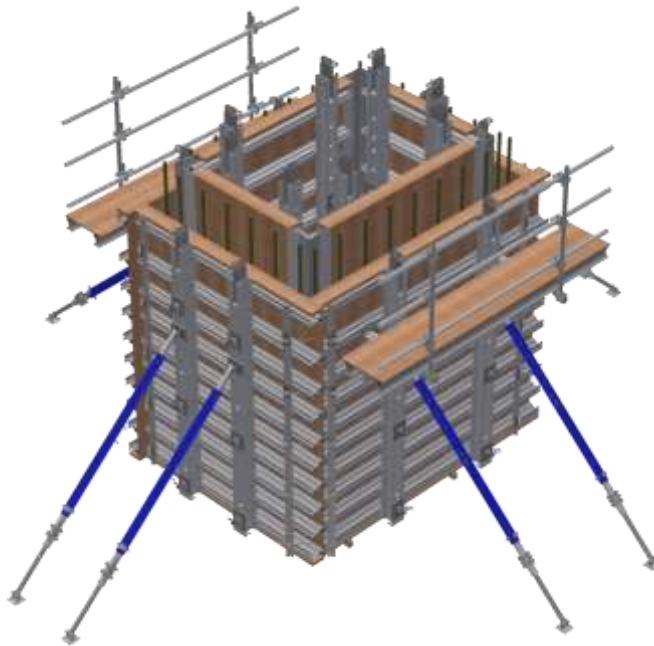
The purpose of this manual is to simplify the understanding and use of the System. In this manual, each component of the 12K Shoring Systems is fully described and illustrated. The features and benefits of using the Hi-Lite 12K Shoring system are outlined in depth and key elements are cross referenced to particular components.

The Manual covers various setup arrangements of the equipment; the correct use of the system including handling and maintenance of the equipment.

**Local authorities and/or a locally registered Professional Engineer should approve all drawing for construction purposes.**

*Barry & Dave Jackson*

**HI-LITE SYSTEMS**





# WHY ALUMINUM?



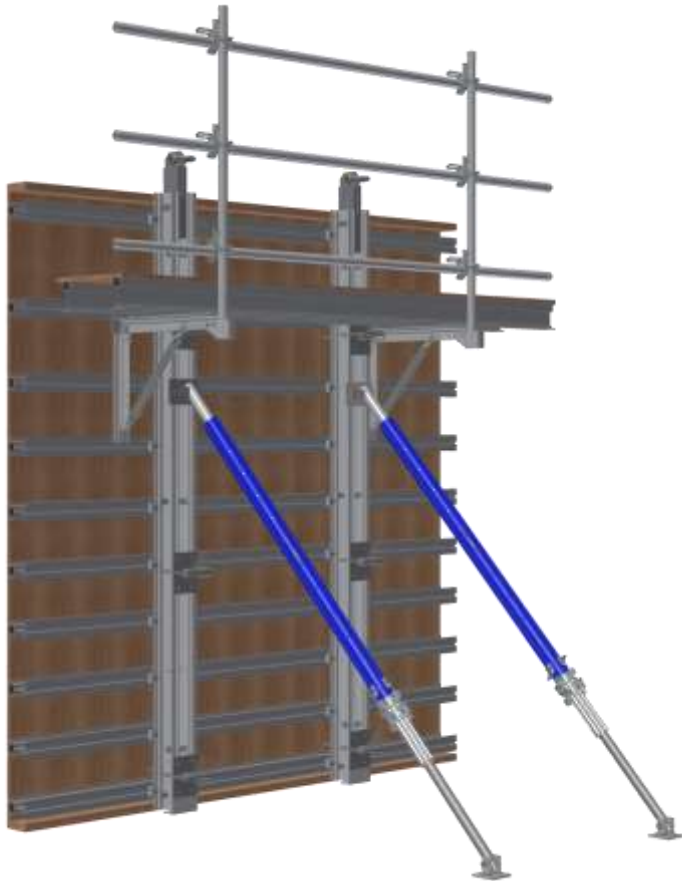
## RECYCLABLE, SUSTAINABLE, VERSATILE:



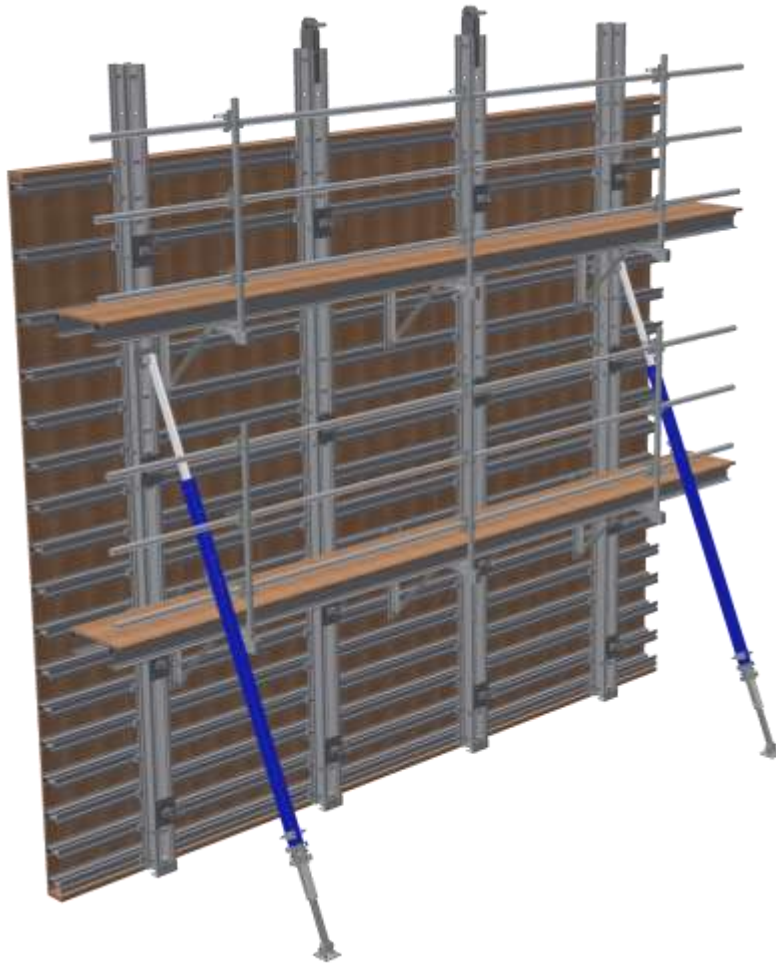
- What exactly does it mean to be green? For a material or product to be considered green, it should have low impact on the environment and therefore favor environmentalism—the practice of protecting and conserving the natural environment and its resources. Aluminum is one such material.
- What makes aluminum a green material? Aluminum is recyclable, sustainable, and versatile; three key qualities for any material being used to construct a green building. Historically, aluminum has proven to be one of the most important materials in successful recycling programs. Aluminum offers high scrap value, widespread consumer acceptance, and aluminum recycling enjoys significant industry support.
- Using recycled building materials saves substantial total energy otherwise used for material production. Producing recycled aluminum building materials reduces pollution emissions and energy use, taking only five percent of the energy needed to produce raw aluminum from bauxite. Jerry Powell, Editor, Resource Recycling says, "Many construction materials are hard, if not impossible, to recycle, and this is a negative factor when wishing to undertake a sustainable construction project. This is not the case, however, for aluminum as a building product. The sizable energy savings attained when scrap aluminum is re-melted makes the recovered metal very valuable."
- Aluminum, one of the most abundant elements in the earth's crust, is an ideal natural materials choice for sustainable construction products.
- From a green design perspective, aluminum's reduced cost over a longer life cycle offers builders a viable economical choice. Aluminum resists the ravages of time, temperature, corrosion, humidity, and warping, adding to its incredibly long life cycle.

## HI-LITE ALUMINUM GANG FORMS

This Manual provides the user with product descriptions and part numbers. As well numerous examples of applications are included to demonstrate the product in use. These include setups and pressure diagrams for concrete loads contained by the forms.



- The Forms are engineered for quick and easy assembly into various configurations with styles to suit every application
- The high strength of aluminum components provides tie spacing's equal to steel systems, but the aluminum form weighs only 1/3 as much.
- By using common components such as Aluminum Strongbacks and Beams, Tie-Rod spacing is maximized.
- Any size of joist beams can be used - 4 1/2", 5 1/2", 6 1/2", and 7 1/2" to produce wall forms in any length or height required. The larger the beams that are used, the fewer, but stronger ties are required.
- Strongbacks 3", 6" and 7 1/4" deep are available in many lengths. Splices are also available.
- Most form sizes can be provided, since the system can be assembled in lengths or heights required.
- Using plywood as the face material allows much flexibility, as many types of plywood can now be selected.
- A highly economical feature of Hi-Lite's conventional wall form system is the choice of beam sizes and the spacing to accommodate the varying pressures
- Hi-Lite "Gang" forming of walls is more economical than hand setting wherever there is sufficient repetition and where cranes are available to handle them.



## HI-LITE ALUMINUM GANG FORMS AVAILABLE IN TWO SYSTEMS

1. ***The mid-range system – must be gang set.***  
It uses a smaller number of medium strength tie rods and medium size of strongbacks. This system uses vertical joists and horizontal beams or stringers which are all medium size.
2. ***The heavy duty gang system***  
Is also gang set and uses the least number of tie rods spaced the furthest apart. This system uses tie rods, strongbacks vertical joists and horizontal beams / stringers which are all heavy-duty.



# ALUMINUM GANG WALLFORM SYSTEMS

**ACCESSORIES ARE AVAILABLE TO COMPLETE THE REQUIREMENTS OF ANY APPLICATION. THEY INCLUDE:**

1. Catwalk Brackets attached to joists or strongbacks;
2. Post Sockets fit standard tube or 2x4 lumber;
3. Tie Plates 50 Kps and smaller;
4. Push pull props;
5. Leveling Plates;
6. Clamps for guard rails;
7. Lifting Lugs;
8. Beam Clips.

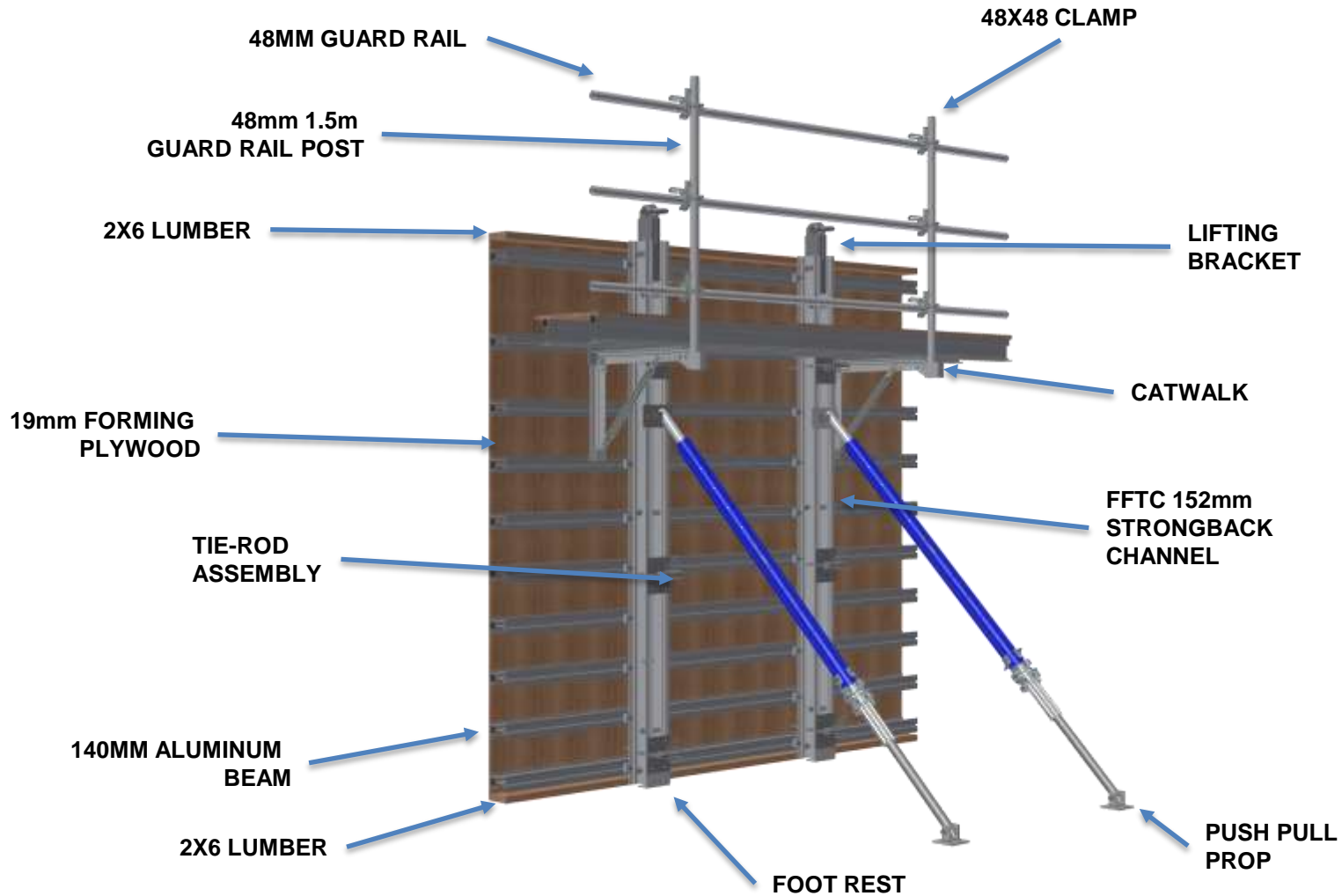
**HI-LITE HAS THREE ALUMINUM STRONGBACK SYSTEMS. NOTE: ALL OF OUR STRONGBACKS CAN BE SPLICED IF REQUIRED.**

## 1. Heavy Duty Gang System

HI-LITE's 185mm (7-1/4") Heavy Duty Aluminum Strongback Beam is usually used in combination with our 190mm (7-1/2") or our 165mm (6-1/2") Aluminum Joist Beam requiring a minimum amount of tie rods spaced the furthest distance apart. These strongbacks are not only great at wall forming but they can also be used as Stringers and/or Joists in Concrete Slab Construction.

## 2. Mid Range Gang System

HI-LITE's 152mm (6") Aluminum Strongback are also used as HI-LITE's Fly Form Top Chords. They can be used in combination with our 165mm (6-1/2") , 140mm (5-1/2") or the 114mm (4-1/2") Aluminum Joist Beams requiring a medium strength tie rods at a slightly closer spacing than with 185mm (7-1/4") Strongback.



**184mm (7.25"):** Heavy Duty Stringer / Strong back used primarily with the 165mm (6.5") and 140mm (5.5") aluminum beams. 1.8m (72") horizontal Tie Spacing.

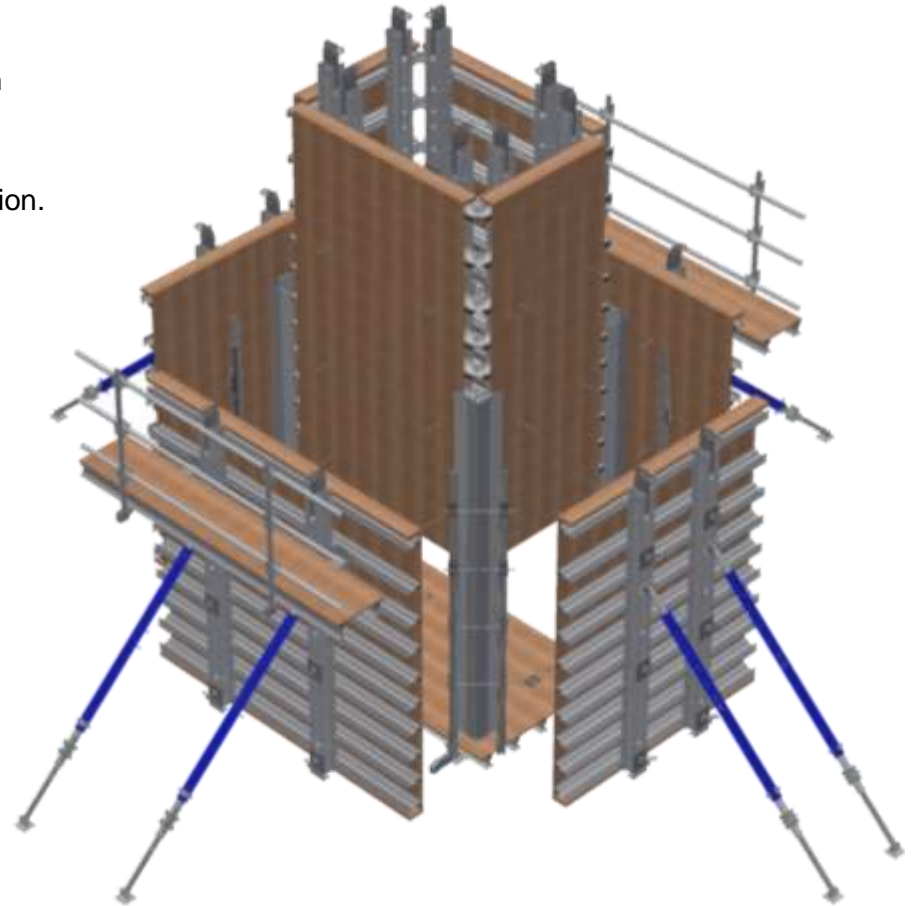
**FFTC / 152mm (6"):** Telescopic Fly Form Top Chord doubles as an excellent Vertical Strongback member. The feature maximizes inventory utilization as all components have multiple re-use applications. 1.5m (60") horizontal Tie Spacing.

**FLTC / 140mm (5.5"):** (Telescopic) Fly Lite & Drop Leg Fly Form Top Chord doubles as an excellent Vertical Strongback member. The feature maximizes inventory utilization as all components have multiple re-use applications. 1.5m (60") horizontal Tie Spacing.



Hi-Lite's Core Walls System utilizing Hi-Lite Gang Wall Forms with stripping corners and working platform with flippers.

Please contact our Engineering department for additional information.



Aluminum Push-pull Props used for alignment of the gang wall form systems. Not used as a structural component.

Shipped complete with connecting brackets and hardware.

Aluminum Push-Pull Props must be bolted onto Beams or Strongbacks by T-bolts.

Bottom Shoe must be anchored to slab, or wood sill.



## CATWALK BRACKETS

The Hi-Lite Catwalk Bracket provides a working platform that is 762mm (30") wide for pouring purposes or for installation / removal of the form work ties. The brackets is hooked onto and bolted to a horizontal beams using T-bolts. Brackets are installed at 2.43m (8'-0") c/c max. and are designed to work with 165mm (6.5"), 140mm (5.5") and 114mm (4.5") beams. The catwalk brackets is shipped complete with post socket. The post socket is designed to accept a 38mm x 89mm (2" x 4") wood post, or a 48mm (1.9") diameter tube.



## LIFTING BRACKETS

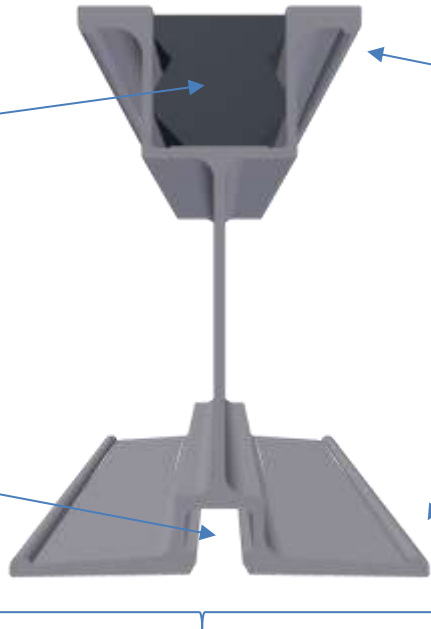
The Hi-Lite Lifting Brackets used with the gang form systems as a lifting lug.

Lifting Brackets can be used with strongback elements in the vertical position. Shipped complete with connecting bolts and shackle.



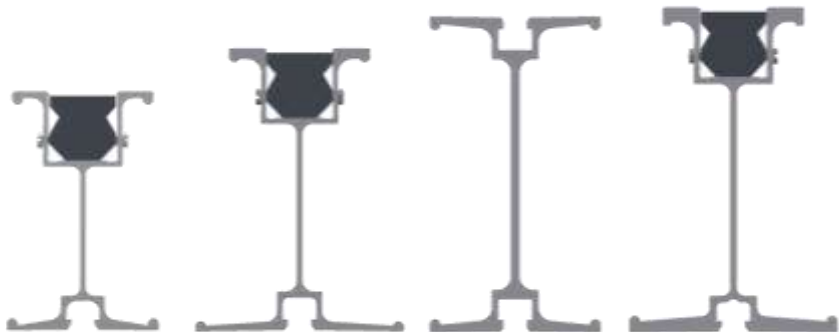
**MORE VERSATILE:** Plastic or wood insert allows for nailing or screwing down plywood decking. Less subject to damage than wooden beams. Reusable. It all adds up to less inventory, less storage, lower transportation cost, and lower carrying costs.

**MORE ECONOMICAL:** 12.7mm (½") T-bolt slots provide for easy fastening of beams and stringers to their supports or to each other. Your workers will be more productive and the lower labour costs will be reflected in your bottom line.

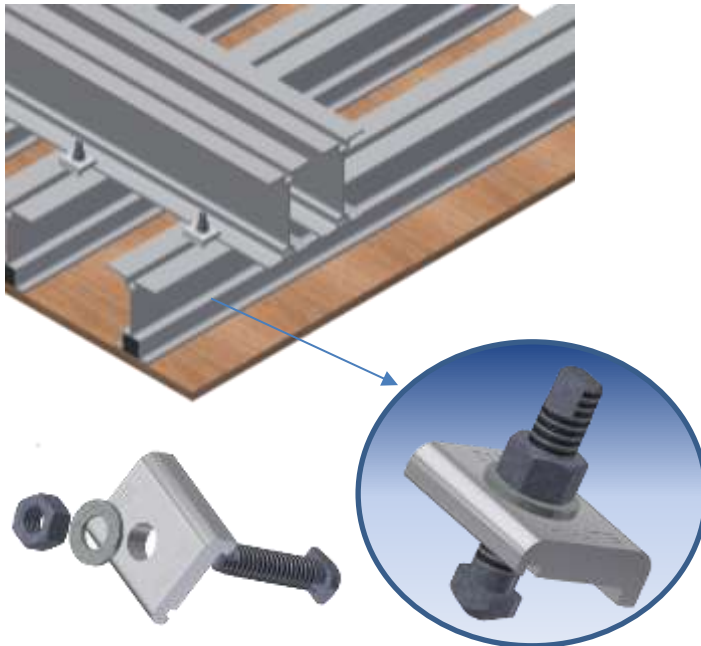


**STRONGER:** Reinforced side flanges resist bending and retain beam clips. Employees spend less time repairing and more time working.

**SAFER:** Wider flanges resist overturning. Fewer accidents and injuries mean less employee downtime and lower insurance costs.



Hi-Lite Aluminum Beams have many other advantages over competing beams. Our designs save time on the job and reduce maintenance. Please refer to our load charts for capacities. Generally speaking, Hi-Lite beams carry more load and usually cost less.



**Note:** The sharp corners very effectively secure one beam to another, preventing all movement. Beam Clips will secure any beam that has a 12.7mm (1/2in) T-bolt slot.

The T-bolt is forged from steel to provide for its special head, which guides the T-bolt into the beam slot. It is 12mm (1/2in) diameter by 45mm (1-3/4in) long, giving enough length to accommodate most uses. The thread is a special coarse Acme thread designed to eliminate seizing up as normal standard threads do.

The nut is loosely fitted on the bolt to provide for easy turning of the nut and still provide full strength of the bolt.

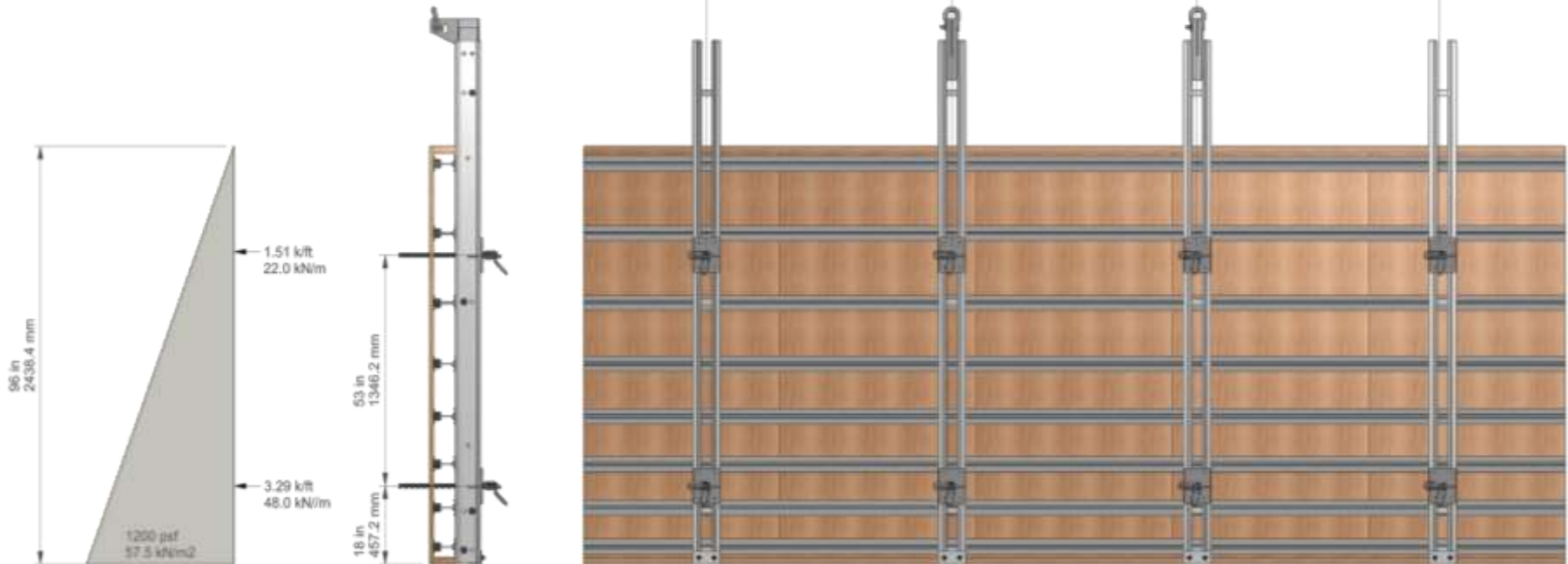


The Beam Clip plate is made from specially-formed high-strength aluminum

When the Beam Clip is assembled with T-bolt and hex nut as an assembly the bolt is crimped to prevent loss of the nut. The assembly is used to tie aluminum beams securely together.

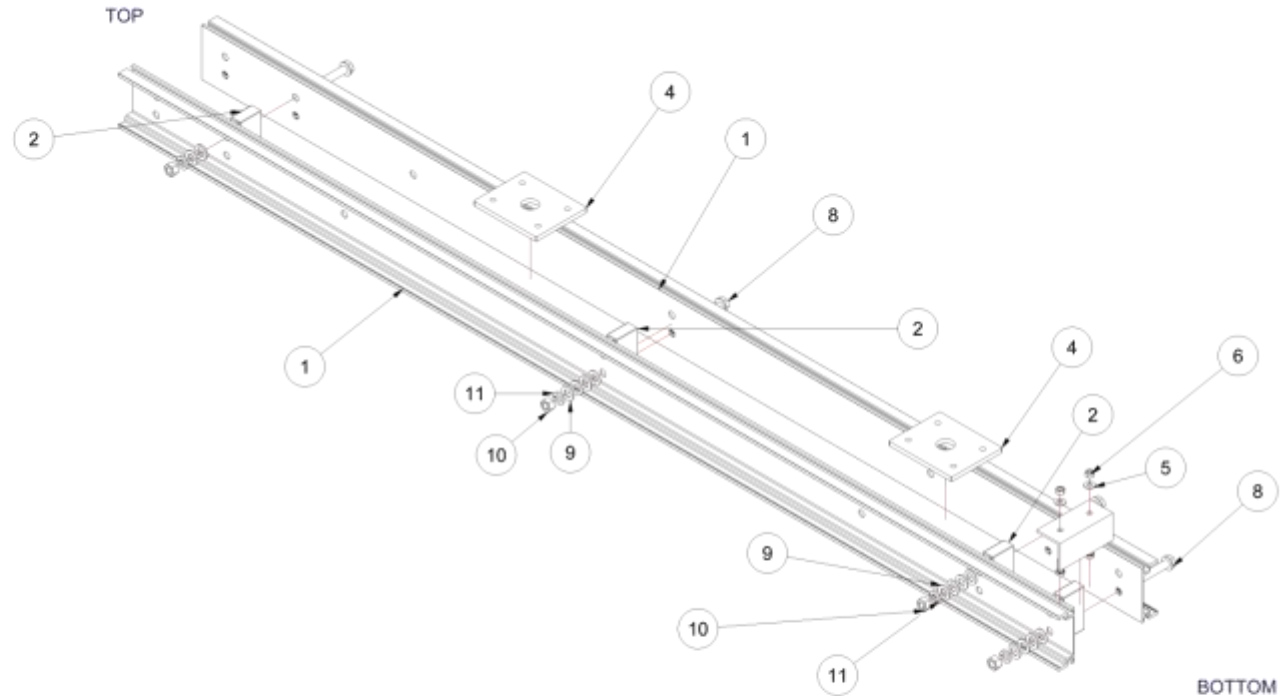
Some other uses of the Beam Clip are:

- a) Securing aluminum beams to standard steel Post Shores.
- b) Securing joists to stringers on Wall Forms or rolling tables, or when a sloping slab is to be poured.



Type	A	B	C
	184mm I Beam (Pair)	152mm (6") FFTC C Channel (Pair)	140mm (5.5") FLTC C Channel (Pair)
mm / in	1828 / 72	1524 / 60	1524 / 60





### Parts List

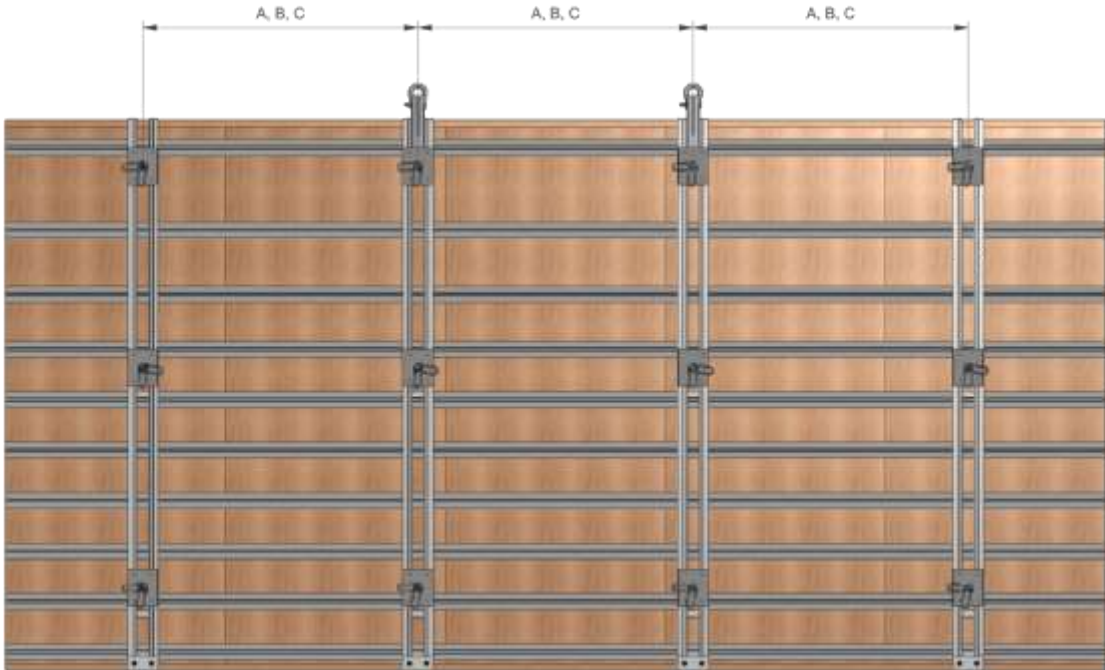
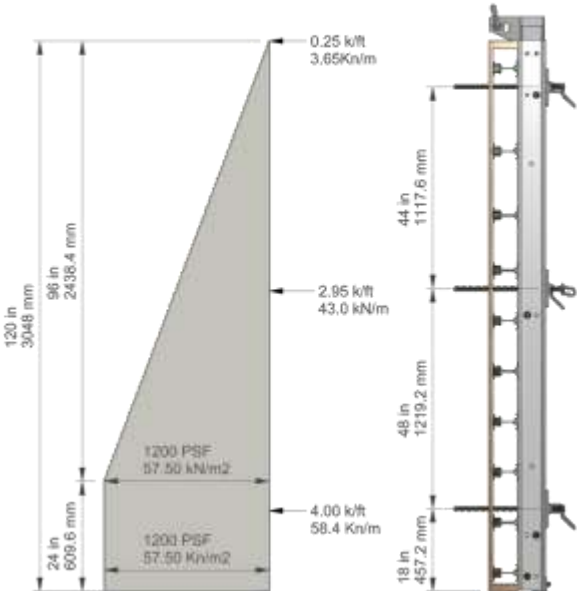
ITEM	QTY	PART NUMBER	DESCRIPTION	MATERIAL
1	2	FFTC120	FLY FORM TOP CHORD 120IN	Aluminum 6351-T6
2	4	FFSPCR	FLY FORM TOP CHORD SPACER	Aluminum-6351 T6
3	1	WQFR152		Aluminum 6061
4	2	WGTP08x1_25	TIE PLATE 6 X 8	Steel, Mild
5	2	HDWF1/2	FLAT WASHER 1/2	Generic
6	2	H0NH1/2NC	HEX NUT 1/2IN NC	Steel, Mild
7	2	ANSI B18.2.1 - 1/2-13 UNC - 1.25	Hex Cap Screw	Steel, Mild
8	4	H0FF34BOLT	FLY FORM 3/4IN X 4 11/16IN BOLT	Steel, Mild
9	15	H0WF34SAE	FLAT WASHER 3/4IN (S.A.E)	Steel, Mild
10	4	ANSI B18.2.2 - 3/4 - 10	Hex Nuts (Inch Series) Hex Nut	Steel, Mild
11	4	ANSI B18.21.1 - 0.75	Helical Spring Lock Washers	Steel, Mild

DRAWN DGJ	30/10/2013
CHECKED BWJ	03/11/2013
APPROVED VB	03/11/2013
FILE NAME FFTC120A 8FT-W iam	
PROJECT NAME WALLFORMS	
GENERAL TOLERANCE	

1680 Bonhill Rd. Mississauga, ON, Canada, L5T 1C8  
Tel: 905-677-4032 / Fax: 905-677-4542  
Web Site: [www.hi-lite-systems.com](http://www.hi-lite-systems.com)  
E-mail: [jasco@hi-lite-systems.com](mailto:jasco@hi-lite-systems.com)

© JASCO SALES INC.  
THIS DRAWING IS THE INCLUSIVE PROPERTY OF JASCO.  
NO UNAUTHORIZED USE, COPY OR DISCLOSURE IS TO BE MADE WITHOUT THE PERMISSION FROM JASCO.

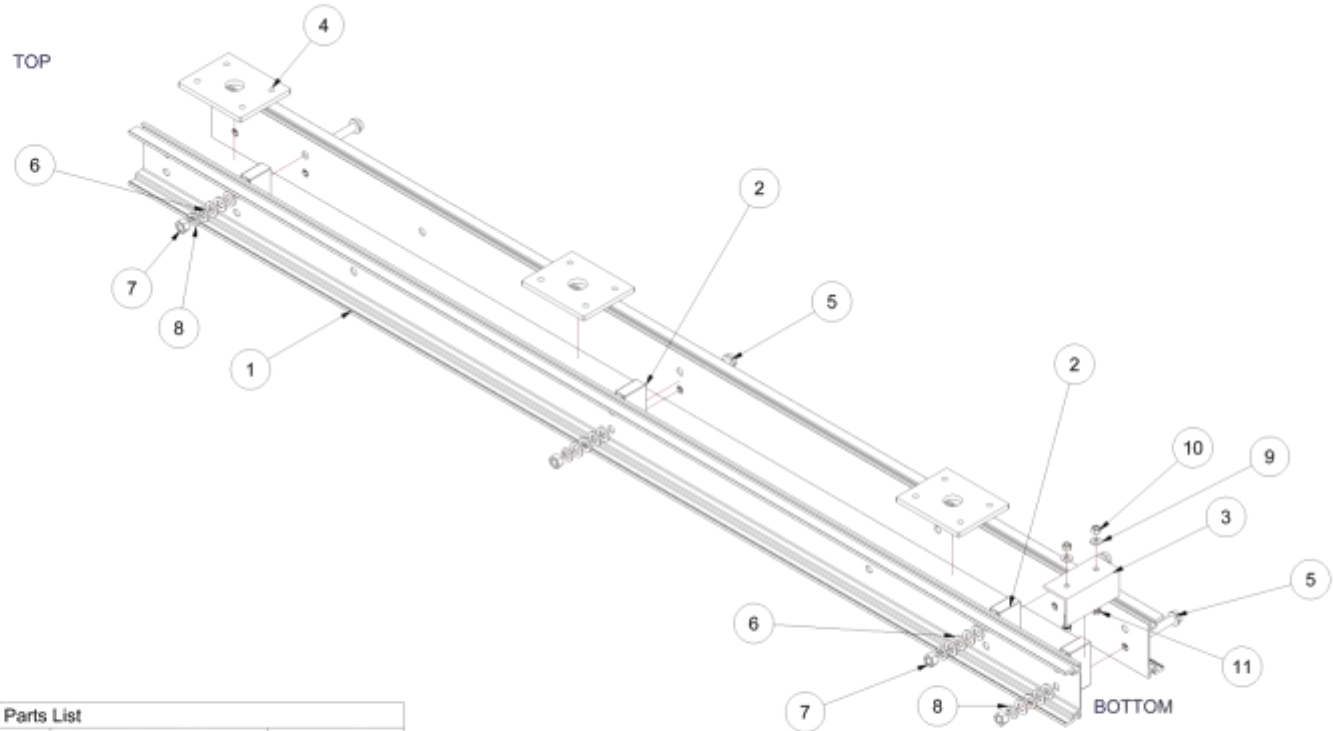
DRAWING TITLE			
<b>152MM STRONG BACK ASSEMBLY 8FT WALL</b>			
SHEET SIZE	PART NO.	REV NO.	
<b>B</b>	<b>FFTC120A 8FT-W</b>	<b>0</b>	
SCALE	UNITS	JOB NO.	SHEET 3 OF 4



Type	A	B	C
	184mm I Beam (Pair)	152mm (6") FFTC C Channel (Pair)	140mm (5.5") FLTC C Channel (Pair)
mm / in	1828 / 72	1524 / 60	1524 / 60

This information is subject to change. Latest information may be obtained from JASCO's web site at [www.hi-lite-systems.com](http://www.hi-lite-systems.com). Copyright © 2008 by JASCO Sales Inc. All rights reserved. No part of this manual may be used or reproduced in any manner whatsoever without prior written permission.





Parts List				
ITEM	QTY	PART NUMBER	DESCRIPTION	MATERIAL
1	2	FFTC120	FLY FORM TOP CHORD 120M	Aluminum 6351-T6
2	4	FFSPCR	FLY FORM TOP CHORD SPACER	Aluminum-6351 T6
3	1	WGFR152		Aluminum 5061
4	3	WGTP6X8x1_25	TIE PLATE 6 X 8	Steel, Mild
5	4	HDFF34BOLT	FLY FORM 3/4IN X 4 11/16IN BOLT	Steel, Mild
6	16	HDWF34SAE	FLAT WASHER 3/4IN (S.A.E)	Steel, Mild
7	4	ANSI B18.2.2 - 3/4 - 10	Hex Nuts (Inch Series) Hex Nut	Steel, Mild
8	4	ANSI B18.21.1 - 0.75	Helical Spring Lock Washers	Steel, Mild
9	2	HDWF1/2	FLAT WASHER 1/2	Generic
10	2	HDNH1/2NC	HEX NUT 1/2IN NC	Steel, Mild
11	2	ANSI B18.2.1 - 1/2-13 UNC - 1.25	Hex Cap Screw	Steel, Mild

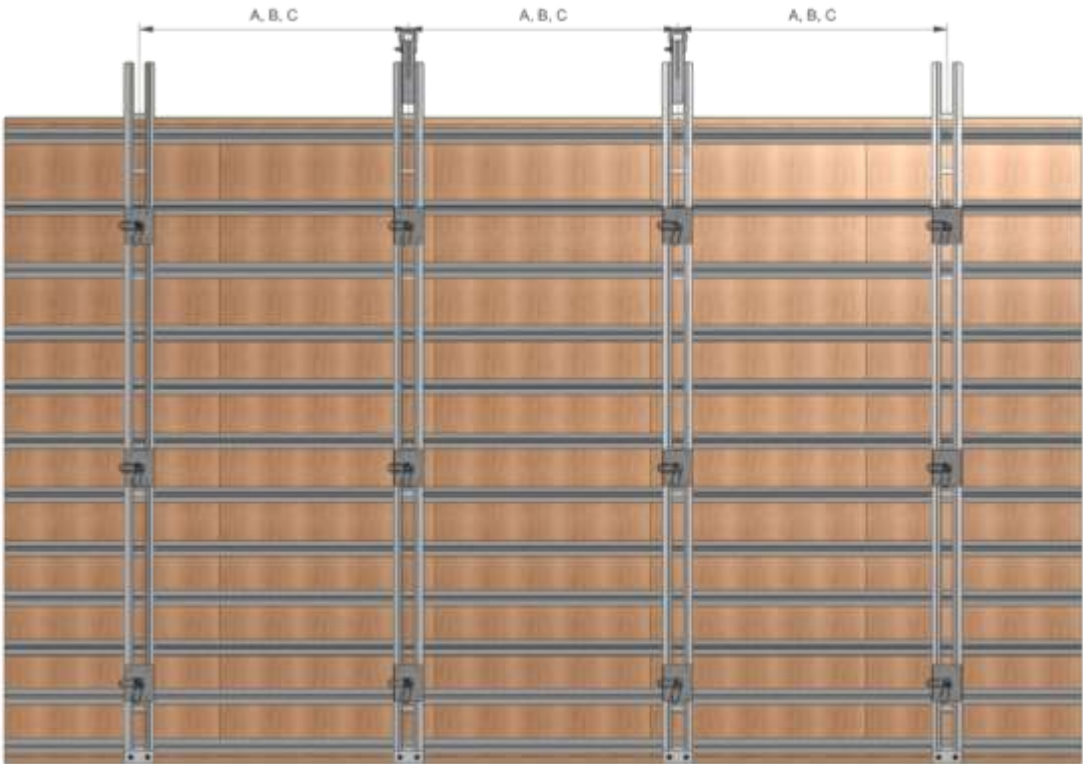
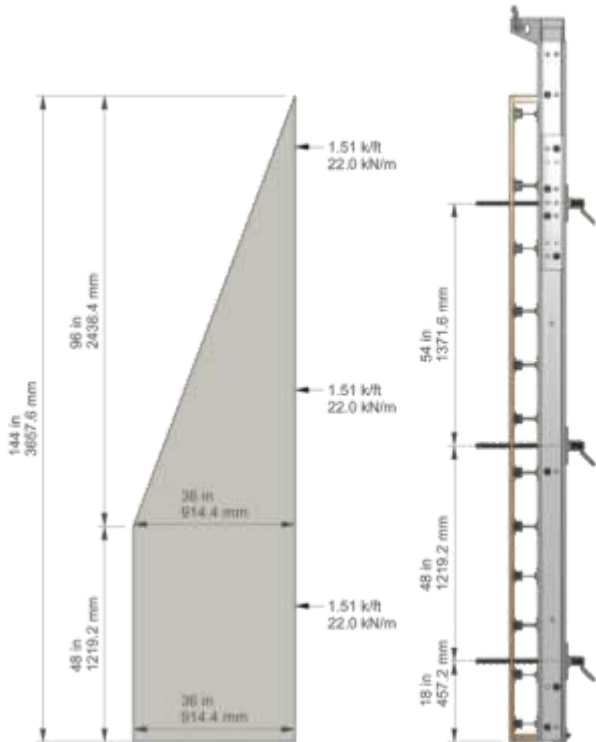
DRAWN Dave	27/10/2013
CHECKED BWJ	03/11/2013
APPROVED VB	03/11/2013
FILE NAME FFTC120 10FT-W.iam	
PROJECT NAME	
GENERAL TOLERANCE	



1680 Bonhill Rd., Mississauga, ON, Canada, L5T 1C8  
 Tel: 905-677-4632 / Fax: 905-677-4542  
 Web Site: [www.hi-lite-systems.com](http://www.hi-lite-systems.com)  
 E-mail: [jasco@hi-lite-systems.com](mailto:jasco@hi-lite-systems.com)

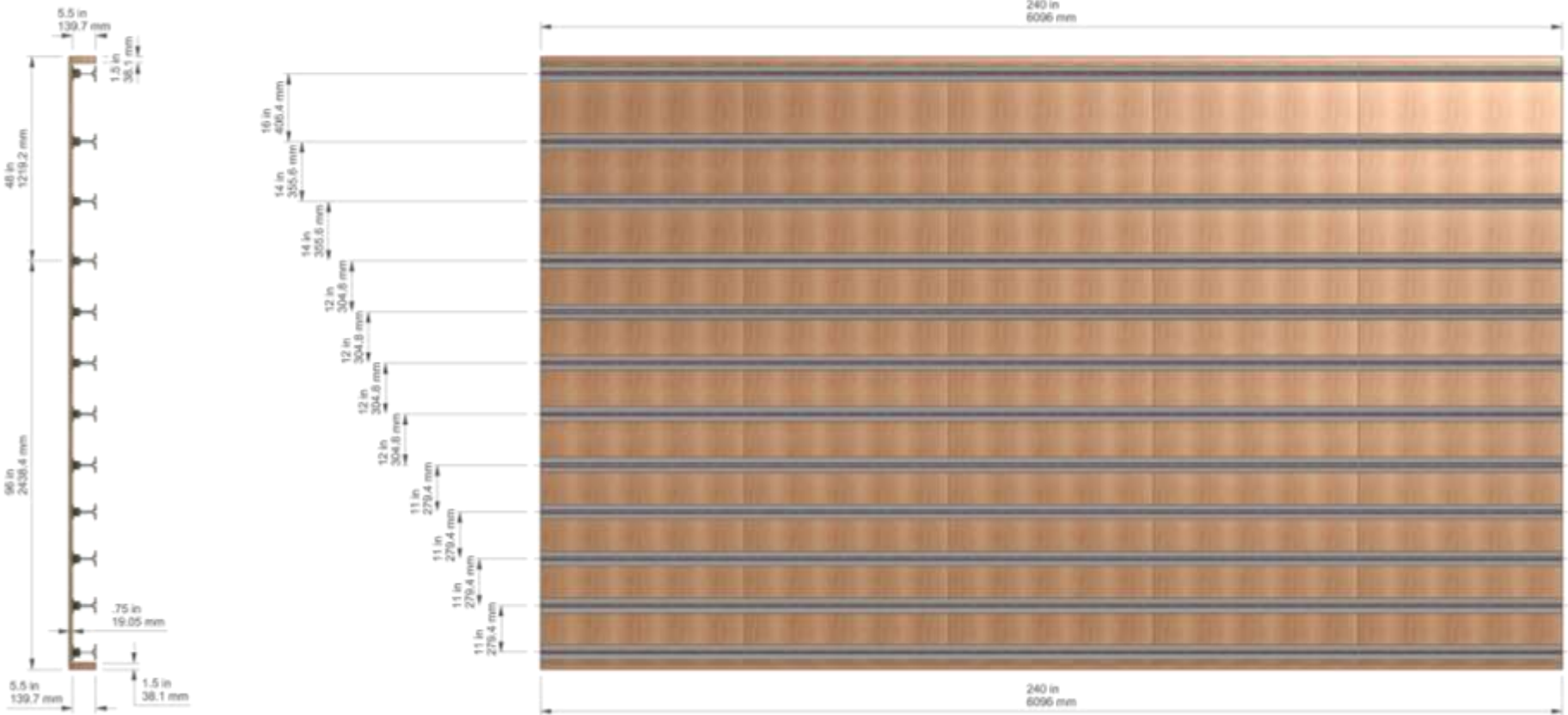
© JASCO SALES INC.  
 THIS DRAWING IS THE EXCLUSIVE PROPERTY OF JASCO.  
 NO UNAUTHORIZED USE, COPY OR DISCLOSURE IS TO BE MADE WITHOUT  
 THE PERMISSION FROM JASCO.

DRAWING TITLE			
SHEET SIZE <b>B</b>	PART NO. <b>FFTC120 10FT-W</b>	REV NO. <b>0</b>	
SCALE	UNITS	JOB NO.	SHEET 3 OF 4

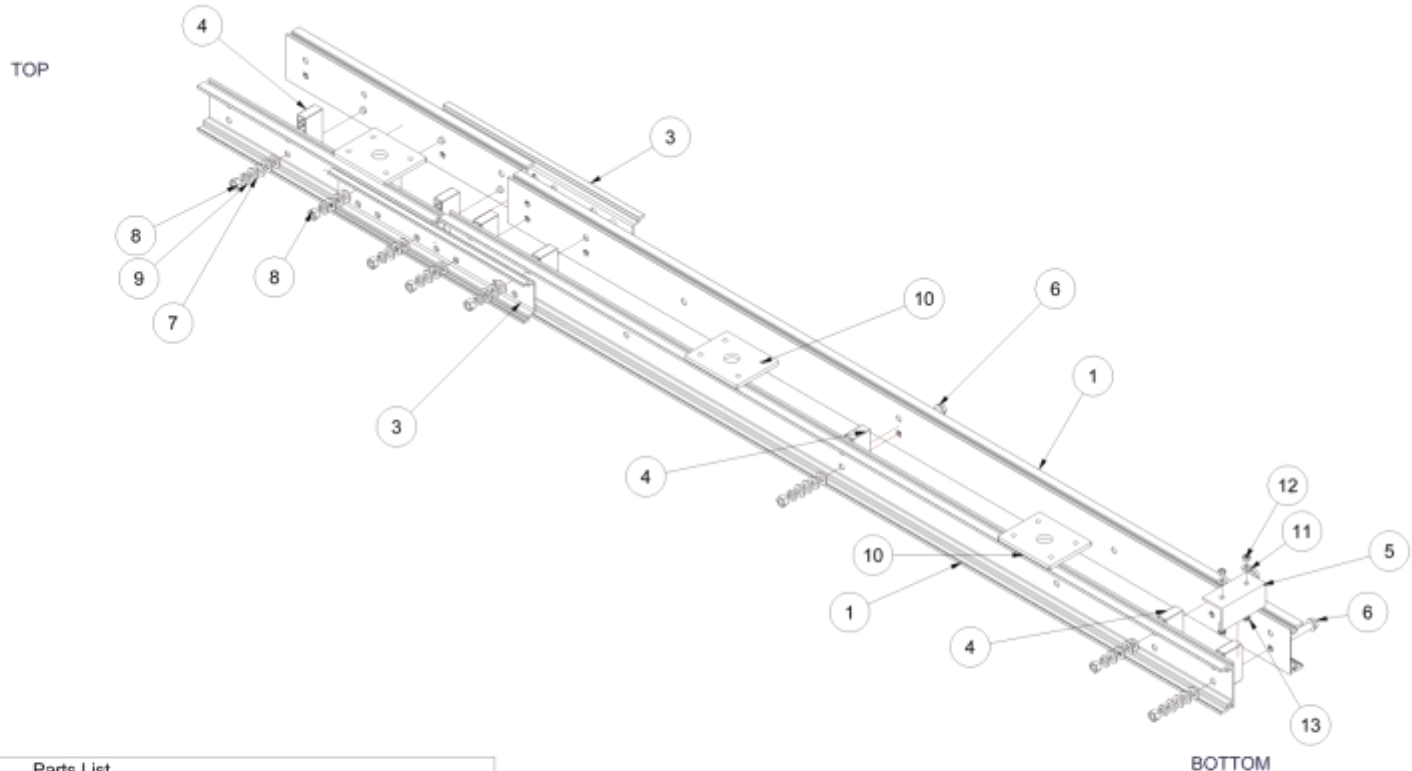


Type	A	B	C
	184mm I Beam (Pair)	152mm (6") FFTC C Channel (Pair)	140mm (5.5") FLTC C Channel (Pair)
mm / in	1828 / 72	1524 / 60	1524 / 60

This information is subject to change. Latest information may be obtained from JASCO's web site at [www.hi-lite-systems.com](http://www.hi-lite-systems.com). Copyright © 2008 by JASCO Sales Inc. All rights reserved. No part of this manual may be used or reproduced in any manner whatsoever without prior written permission.



This information is subject to change. Latest information may be obtained from JASCO's web site at [www.hi-lite-systems.com](http://www.hi-lite-systems.com). Copyright © 2008 by JASCO Sales Inc. All rights reserved. No part of this manual may be used or reproduced in any manner whatsoever without prior written permission.



Parts List

ITEM	QTY	PART NUMBER	DESCRIPTION	MATERIAL	MASS
1	2	FFTC120	FLY FORM TOP CHORD 120IN	Aluminum 6351-T6	25.771 lbmass
2	2	FFTC36	FLY FORM TOP CHORD 36IN	Aluminum 6351-T6	7.700 lbmass
3	2	FFTCSP	FLY FORM TOP CHORD SPLICE PLATE	Aluminum 6351-T6	4.721 lbmass
4	6	FFSPCR	FLY FORM TOP CHORD SPACER	Aluminum-6351 T6	0.402 lbmass
5	1	WGFR152		Aluminum 6061	0.938 lbmass
6	6	HDFF34BOLT	FLY FORM 3/4IN X 4 11/16IN BOLT	Steel, Mild	0.753 lbmass
7	30	HDWF34SAE	FLAT WASHER 3/4IN (S.A.E)	Steel, Mild	0.045 lbmass
8	8	ANSI B18.2.2 - 3/4 - 10	Hex Nuts (Inch Series) Hex Nut	Steel, Mild	0.138 lbmass
9	6	ANSI B18.21.1 - 0.75	Helical Spring Lock Washers	Steel, Mild	0.04287 lbmass
10	3	WGTP6X8r1_2S	TIE PLATE 6 X 8	Steel, Mild	6.896 lbmass
11	2	HDWF1/2	FLAT WASHER 1/2	Generic	0.003 lbmass
12	2	HDRH1/2NC	HEX NUT 1/2IN NC	Steel, Mild	0.043 lbmass
13	2	ANSI B18.2.1 - 1/2-13 UNC - 1.25	Hex Cap Screw	Steel, Mild	0.111 lbmass

DRAWN Dave	31/10/2013
CHECKED JJ	
APPROVED VB	
FILE NAME FFTC156A 12FT-W.iam	
PROJECT NAME	
GENERAL TOLERANCE	

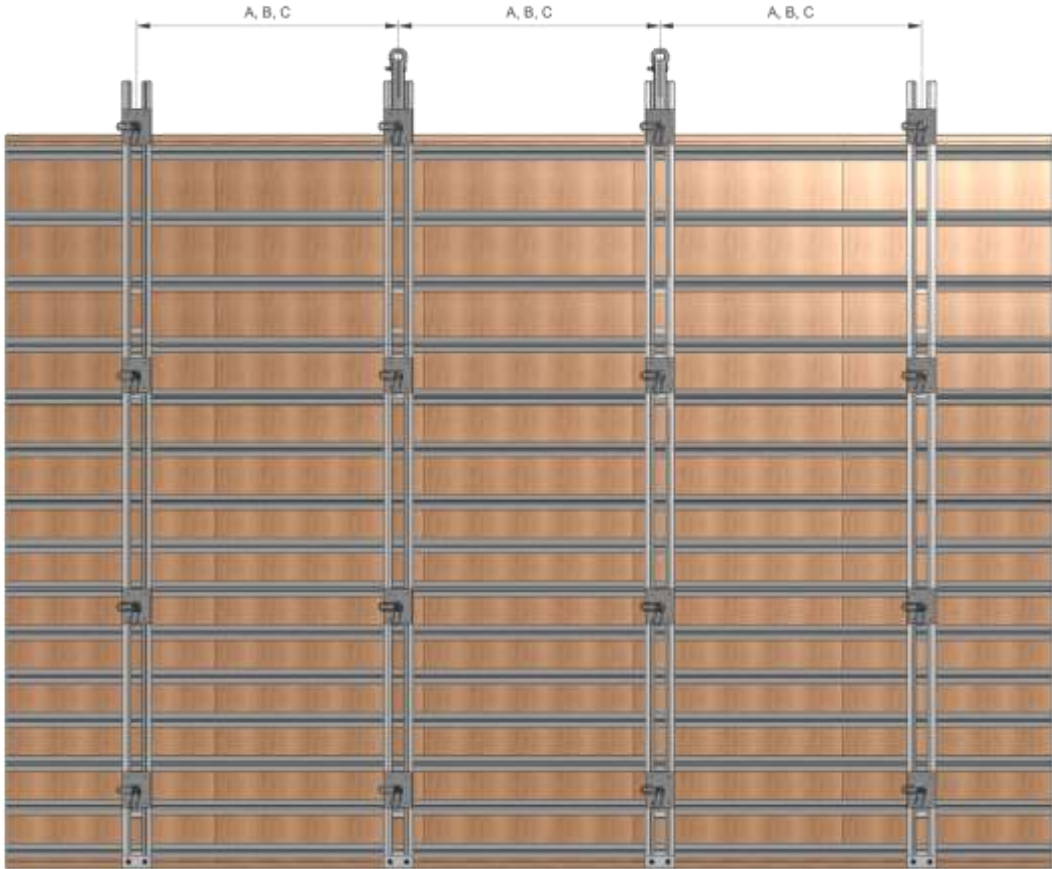
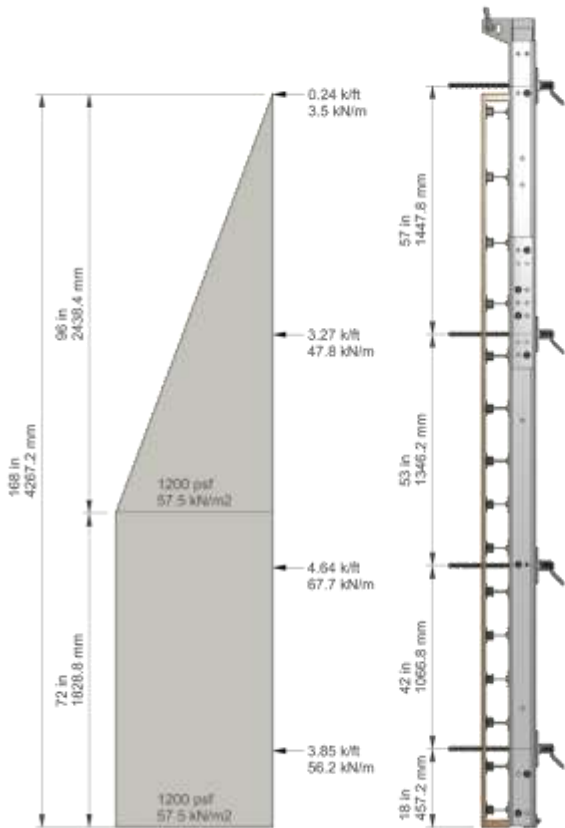
1680 Bonhill Rd., Mississauga, ON, Canada, L5T 1C8  
 Tel: 905-677-4032 / Fax: 905-677-4542  
 Web Site: [www.hi-lite-systems.com](http://www.hi-lite-systems.com)  
 E-mail: [jasco@hi-lite-systems.com](mailto:jasco@hi-lite-systems.com)

© JASCO SALES INC.  
 THIS DRAWING IS THE EXCLUSIVE PROPERTY OF JASCO.  
 NO UNAUTHORIZED USE, COPY OR DISCLOSURE IS TO BE MADE WITHOUT THE PERMISSION FROM JASCO.

DRAWING TITLE  
**152MM STRONG BACK ASSEMBLY  
 12FT WALL**

SHEET SIZE <b>B</b>	PART NO. <b>FFTC156A 12FT-W</b>	REV NO. <b>0</b>
SCALE	UNITS	JOB NO.

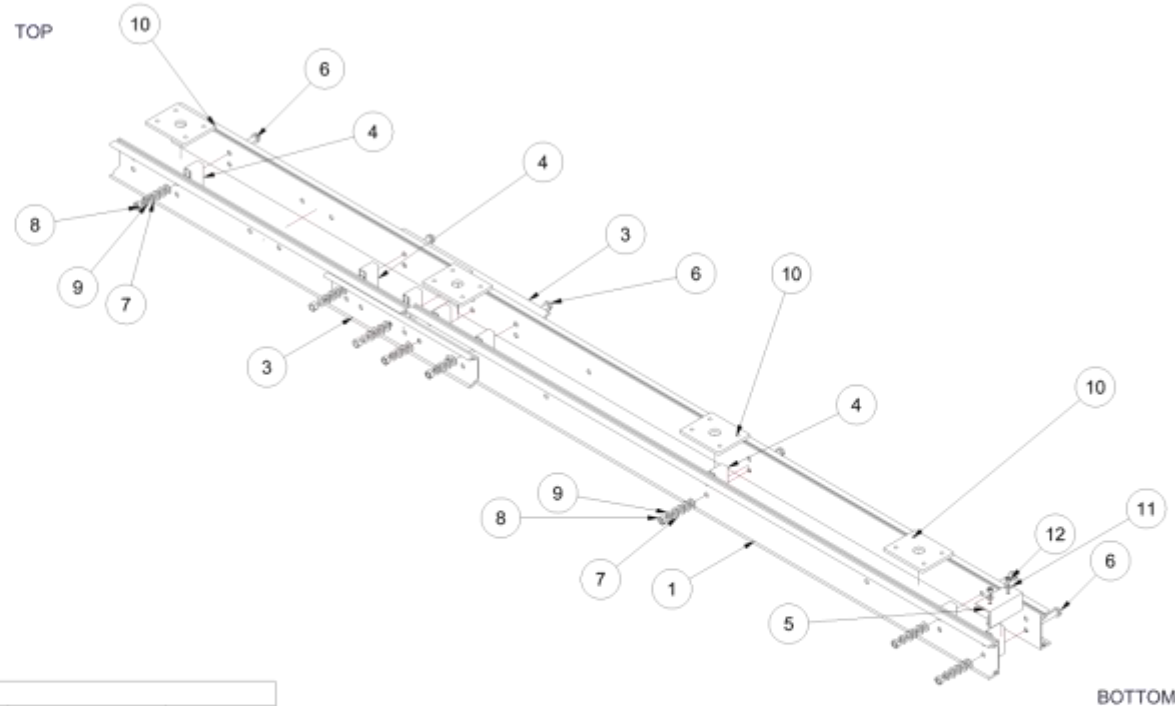
SHEET 3 OF 4



Type	A	B	C
	184mm I Beam (Pair)	152mm (6") FFTC C Channel (Pair)	140mm (5.5") FLTC C Channel (Pair)
mm / in	1828 / 72	1524 / 60	1524 / 60

This information is subject to change. Latest information may be obtained from JASCO's web site at [www.hi-lite-systems.com](http://www.hi-lite-systems.com). Copyright © 2008 by JASCO Sales Inc. All rights reserved. No part of this manual may be used or reproduced in any manner whatsoever without prior written permission.





Parts List

ITEM	QTY	PART NUMBER	DESCRIPTION	MATERIAL	MASS
1	2	FFTC120	FLY FORM TOP CHORD 120IN	Aluminum 6351-T6	25.771 lbmass
2	2	FFTC60	FLY FORM TOP CHORD 60IN	Aluminum 6351-T6	12.857 lbmass
3	2	FFTCSP	FLY FORM TOP CHORD SPLICE PLATE	Aluminum 6351-T6	4.721 lbmass
4	8	FFPCSR	FLY FORM TOP CHORD SPACER	Aluminum-6351 T6	0.402 lbmass
5	1	WGFR152		Aluminum 6061	0.938 lbmass
6	8	HDF34BOLT	FLY FORM 3/4IN X 4 11/16IN BOLT	Steel, Mild	0.753 lbmass
7	32	HDWF3/4SAE	FLAT WASHER 3/4IN (S.A.E)	Steel, Mild	0.045 lbmass
8	6	ANSI B18.2.2 - 3/4 - 10	Hex Nuts (Inch Series) Hex Nut	Steel, Mild	0.139 lbmass
9	6	ANSI B18.21.1 - 0.75	Helical Spring Lock Washers	Steel, Mild	0.04287 lbmass
10	4	WGTP6X8x1_2S	TIE PLATE 6 X 8	Steel, Mild	6.898 lbmass
11	2	HDWF1/2	FLAT WASHER 1/2	Generic	0.003 lbmass
12	2	HDNH1/2NC	HEX NUT 1/2IN NC	Steel, Mild	0.043 lbmass
13	2	ANSI B18.2.1 - 1/2-13 UNC - 1.25	Hex Cap Screw	Steel, Mild	0.111 lbmass
14	2	HDNH3/4NC	HEX NUT 3/4IN NC	Steel, Mild	0.137 lbmass
15	2	HDWL34	LOCK WASHER 3/4 IN	Steel, Mild	0.041 lbmass

DRAWN DGJ	30/10/2013
CHECKED BWJ	03/11/2013
APPROVED VB	03/11/2013
FILE NAME FFTC180A 14FT-W iam	
PROJECT NAME WALLFORMS	
GENERAL TOLERANCE	



1680 Bonhill Rd., Mississauga, ON, Canada, L5T 1C8  
Tel: 905-677-4032 / Fax: 905-677-4542  
Web Site: www.hi-lite-systems.com  
E-mail: jasco@hi-lite-systems.com

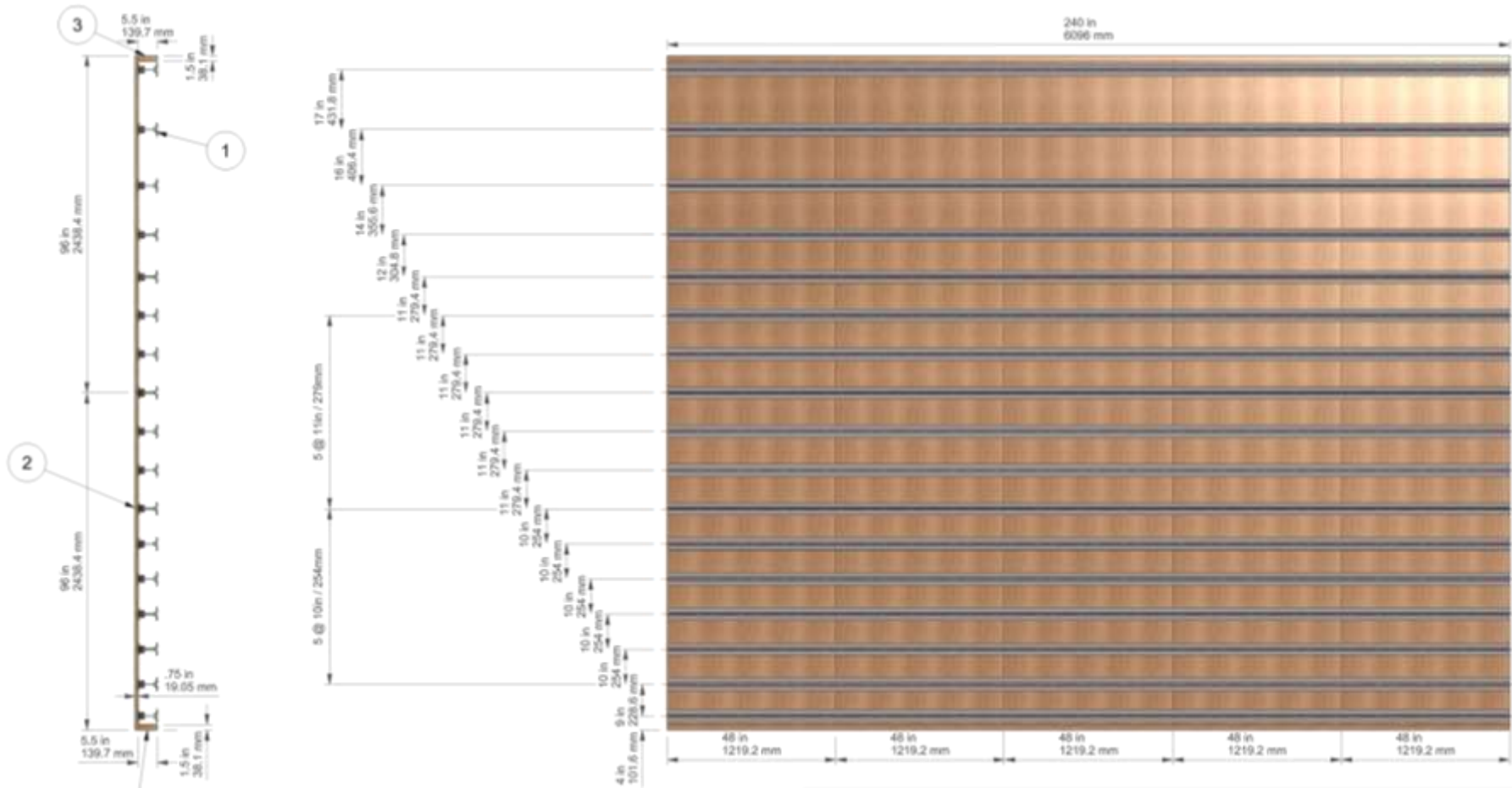
© JASCO SALES INC.  
THIS DRAWING IS THE EXCLUSIVE PROPERTY OF JASCO.  
NO UNAUTHORIZED USE, COPY OR DISCLOSURE IS TO BE MADE WITHOUT  
THE PERMISSION FROM JASCO.

DRAWING TITLE <b>152MM STRONG BACK ASSEMBLY 14FT WALL</b>			
SHEET SIZE <b>B</b>	PART NO. <b>FFTC180A 14FT-W</b>	REV NO. <b>0</b>	
SCALE	UNITS	JOB NO.	SHEET 3 OF 4

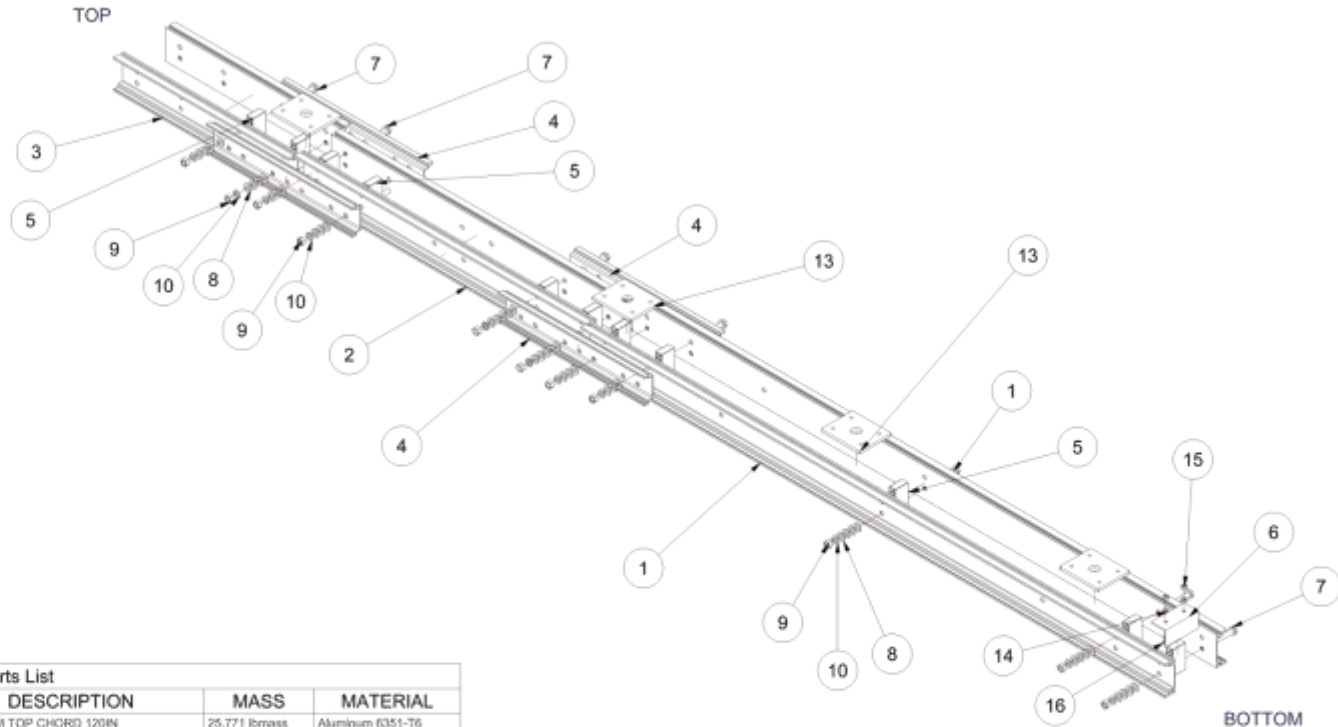




# 4.8M/16FT-DESIGN DETAILS



This information is subject to change. Latest information may be obtained from JASCO's web site at [www.hi-lite-systems.com](http://www.hi-lite-systems.com). Copyright © 2008 by JASCO Sales Inc. All rights reserved. No part of this manual may be used or reproduced in any manner whatsoever without prior written permission.



Parts List					
ITEM	QTY	PART NUMBER	DESCRIPTION	MASS	MATERIAL
1	2	FFTC120	FLY FORM TOP CHORD 120IN	25.771 lbmass	Aluminum 6351-T6
2	2	FFTC60	FLY FORM TOP CHORD 60IN	12.857 lbmass	Aluminum 6351-T6
3	2	FFTC36	FLY FORM TOP CHORD 36IN	7.700 lbmass	Aluminum 6351-T6
4	4	FFTCSP	FLY FORM TOP CHORD SPLICE PLATE	4.721 lbmass	Aluminum 6351-T6
5	11	FFSPCR	FLY FORM TOP CHORD SPACER	0.402 lbmass	Aluminum 6351 T6
6	1	WGFPR152		0.938 lbmass	Aluminum 6061
7	11	HDFP34BOLT	FLY FORM 3/4IN X 4 11/16IN BOLT	0.753 lbmass	Steel, Mild
8	42	HDWF34SNE	FLAT WASHER 3/4IN (S.A.E)	0.045 lbmass	Steel, Mild
9	9	ANSI B18.2.2 - 3/4 - 10	Hex Nuts (Inch Series) Hex Nut	0.139 lbmass	Steel, Mild
10	9	ANSI B18.21.1 - 0.75	Helical Spring Lock Washers	0.04207 lbmass	Steel, Mild
11	2	HDNH34NC	HEX NUT 3/4IN NC	0.137 lbmass	Steel, Mild
12	2	HDWL34	LOCK WASHER 3/4 IN	0.041 lbmass	Steel, Mild
13	4	WGTP6X8x1_2S	TIE PLATE 6 X 8	6.896 lbmass	Steel, Mild
14	2	HDWF1/2	FLAT WASHER 1/2	0.003 lbmass	Generic
15	2	HDNH1/2NC	HEX NUT 1/2IN NC	0.043 lbmass	Steel, Mild
16	2	ANSI B18.2.1 - 1/2-13 UNC - 1.25	Hex Cap Screw	0.111 lbmass	Steel, Mild

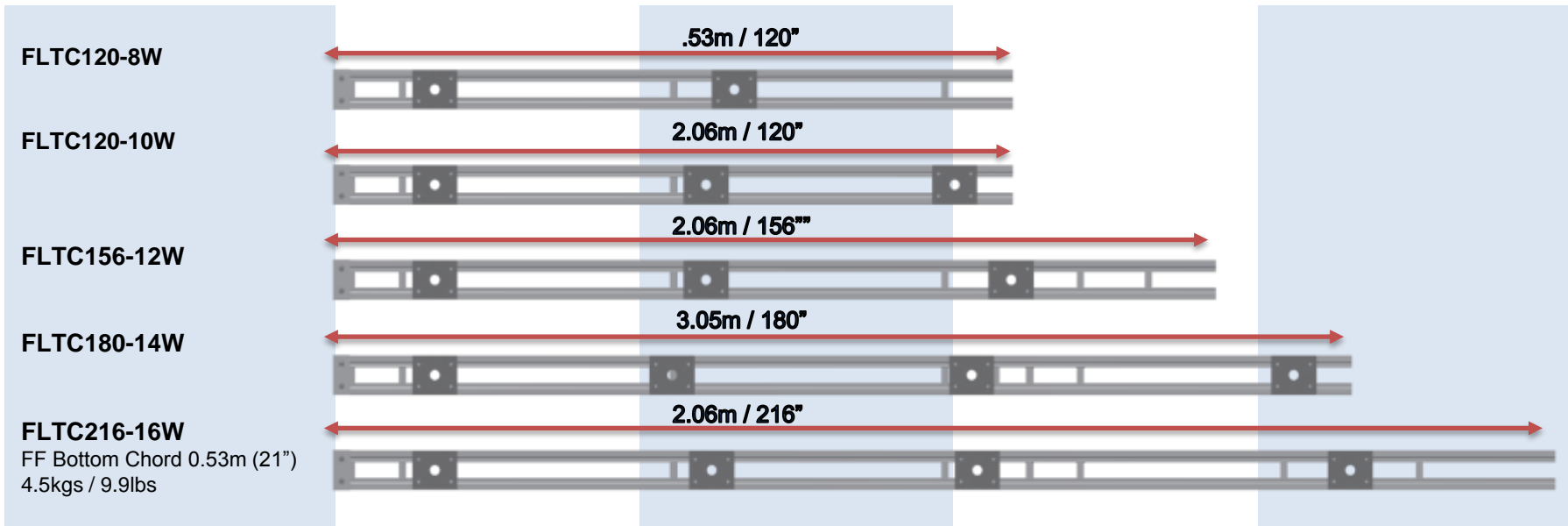
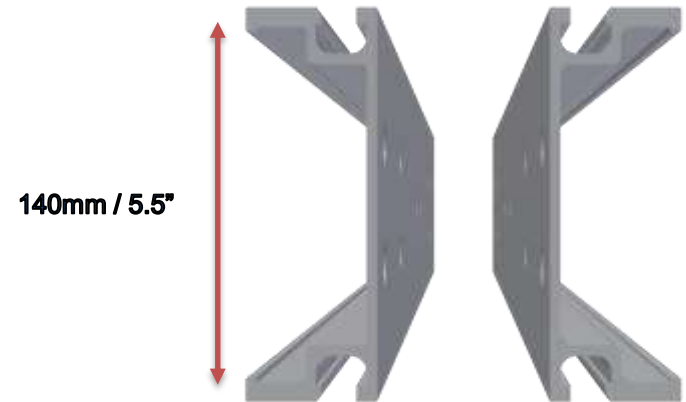
DRAWN	DGJ	30/10/2013
CHECKED	BWJ	03/11/2013
APPROVED	VB	03/11/2013
FILE NAME	FFTC216A-16FT-W.jam	
PROJECT NAME		
GENERAL TOLERANCE		

1600 Bonhill Rd., Mississauga, ON, Canada, L5T 1C8  
Tel: 905-677-4632 / Fax: 905-677-4542  
Web Site: www.hi-lite-systems.com  
E-mail: jasco@hi-lite-systems.com

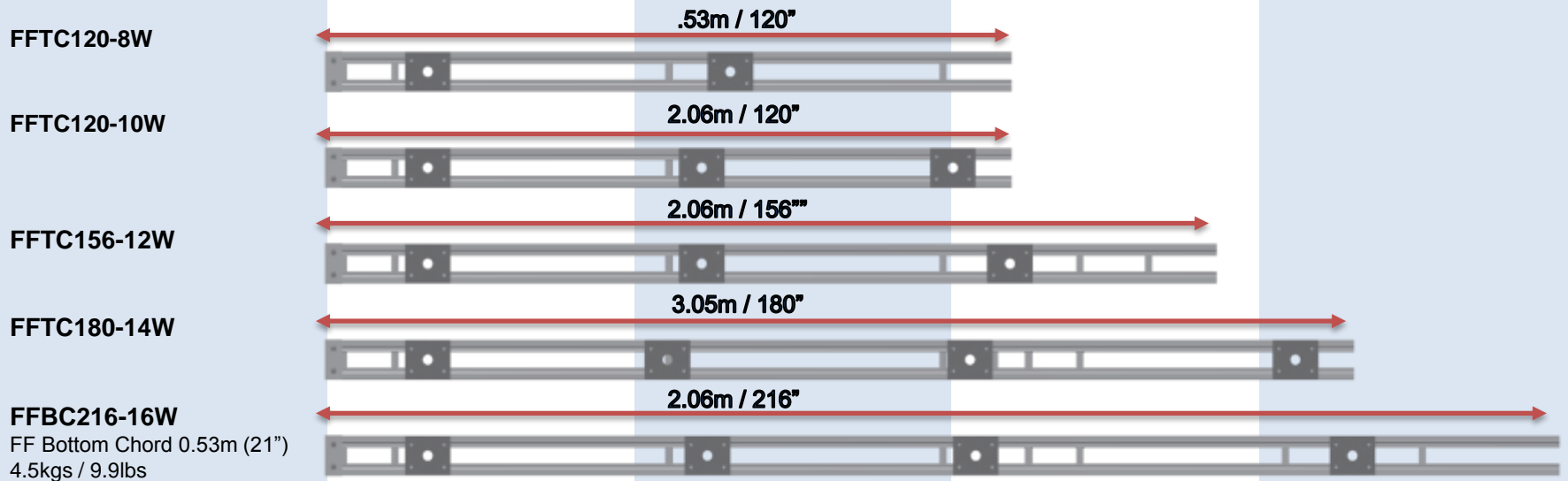
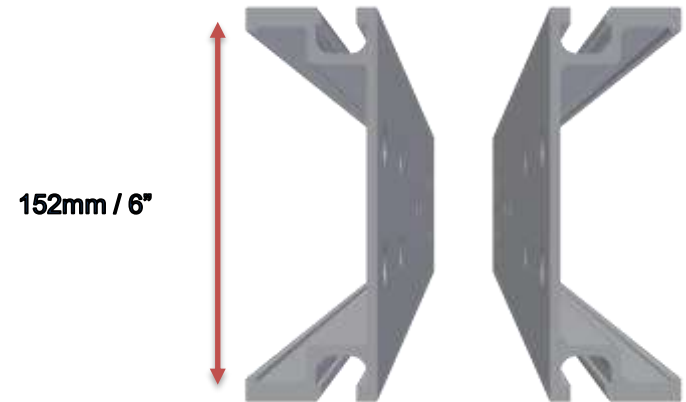
© JASCO SALES INC.  
THIS DRAWING IS THE EXCLUSIVE PROPERTY OF JASCO.  
NO UNAUTHORIZED USE, COPY OR DISCLOSURE IS TO BE MADE WITHOUT THE PERMISSION FROM JASCO.

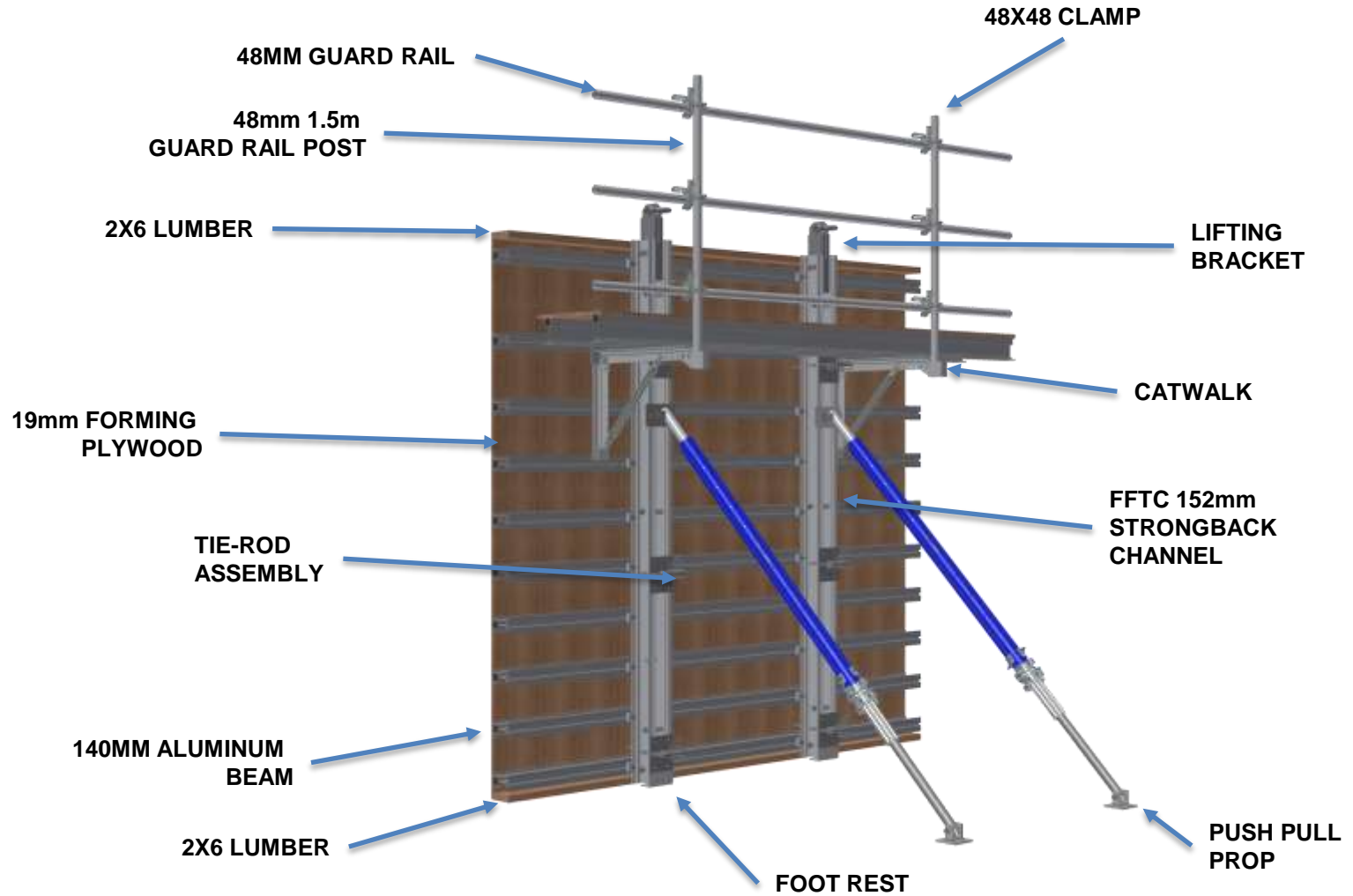
DRAWING TITLE		
<b>152MM STRONG BACK ASSEMBLY 8FT WALL</b>		
SHEET SIZE	PART NO.	REV NO.
<b>B</b>	<b>FFTC216A-16FT-W</b>	<b>0</b>
SCALE	UNITS	JOB NO.
		SHEET 3 OF 4

The HI-LITE FLTC (140MM) Strongback pairs, are exactly the same parts used for the Fly Lite Top Chords on both the Telescopic Fly Lite systems, and as well the Drop Leg system. This, combined with the aluminum beams used on the Fly Forms can be used to create Wall Forms ideally as a 140mm Beam with the FLTC or 140mm Strongback channels.



The HI-LITE FFTC (152MM) Strongback pairs, are exactly the same parts used for the Fly Form Top Chords on both the Telescopic Fly Form systems, and as well the Drop Leg system. This, combined with the aluminum beams used on the Fly Forms can be used to create Wall Forms ideally as a 140mm Beam with the FFTC or 152mm Strongback channels.





**WGPP25K**  
Push Pull Prop



**WGPP25K64A**  
25K Push Pull Prop Assembly  
c/w 6' 25K Leg & 4' Ext. Tube  
34.25 kg / 75.5 lbs

**WGPP25K86A**  
25K Push Pull Prop Assembly  
c/w 8' 25K Leg & 6' Ext. Tube  
39.33 kg / 86.7 lbs

**WGPP25K108A**  
25K Push Pull Prop Assembly  
c/w 10' 25K Leg & 8' Ext. Tube  
44.41 kg / 97.9 lbs

**WGPP25K64A**  
25K Push Pull Prop Assembly  
c/w 12' 25K Leg & 10' Ext. Tube  
49.53 kg / 109.2 lbs

**WGPP25K64A**  
25K Push Pull Prop Assembly  
c/w 16' 25K Leg & 12' Ext. Tube  
57.47 kg / 126.7 lbs

**BM165P**

6-1/2" (165 mm) Aluminum Beam c/w  
Plastic Insert  
6.3 kgs per meter / 4.3 lbs per LF



**BM140P**

5-1/2" (140 mm) Aluminum Beam c/w  
Plastic Insert  
??? kgs per meter / 3.4 lbs per LF



**BM184S**

7-1/4" Strongback (Pair)  
??? kgs per meter / 8,8 lbs per LF (Pair)



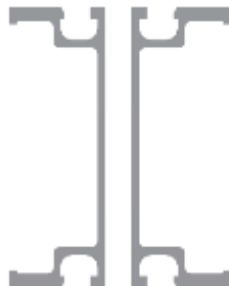
**BM152S**

6" Strongback/Top Chord (Pair)  
??? kgs per meter / 5.4 lbs per LF (Pair)



**BM140S**

5-1/2" Strongback/Top Chord (Pair)  
??? kgs per meter / 3.6 lbs per LF (Pair)



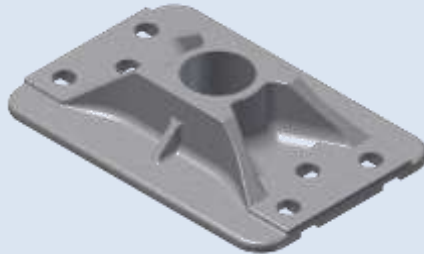
**WGOCSB**

Outside Corner Strongback  
??? kgs per meter / 1.4 lbs per LF



## **WGTPC**

Tie Plate 48,000 lbs c/w T-Bolt  
3.18 kgs / 7.0 lbs



## **DESCRIPTION:**

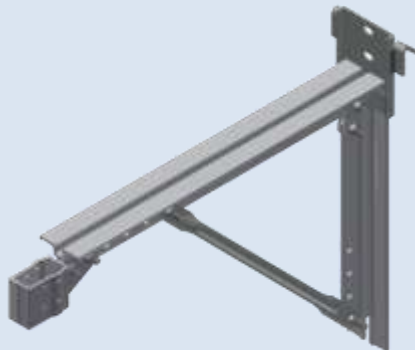
THIS CAST HEAVY DUTY TIE PLATE IS DESIGNED WITH BUILT IN LOCATING TABS TO PROVIDE THE EXACT DISTANCE BETWEEN THE STRONGBACK PAIRS.

## **APPLICATIONS:**

TO BE USED FOR HEAVY DUTY WALL FORM APPLICATIONS WITH THE 165MM BEAM AND THE 184MM STRONGBACK. SHIPPED COMPLETE WITH T-BOLTS. IT HAS A SAFE WORKING LOAD OF 182KN (41 KIPS) CAPACITY. (SF 2:1)

## **WGCW**

Catwalk Bracket  
7.08 kgs / 15.6 lbs



## **DESCRIPTION:**

DESCRIPTION: THE HI-LITE CATWALK BRACKET PROVIDES A WORKING PLATFORM THAT IS 762MM (30") WIDE

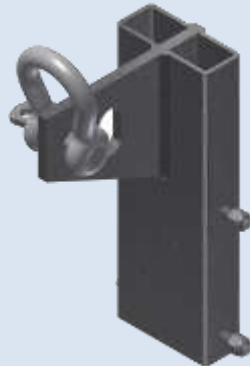
## **APPLICATIONS:**

USED WITH GANGED WALL FORM SYSTEMS TO PROVIDE A WALKWAY FOR POURING PURPOSES OR FOR INSTALLATION / REMOVAL OF FORM WORK TIES. THE BRACKET IS HOOKED ONTO AND T-BOLTED TO A HORIZONTAL BEAM USING HI-LITE T-BOLT. BRACKETS ARE INSTALLED AT 2.43M (8'-0") C/C MAX. AND ARE DESIGNED TO WORK WITH THE 165MM (6.5"), 140MM (5.5"), AND THE 114M (4.5") BEAMS. THE CATWALK BRACKET IS SHIPPED COMPLETE WITH POST SOCKET. THE POST SOCKET IS DESIGNED TO ACCEPT A 38MMX89MM (2"X4") WOOD POST, OR A 48MM (1.9") DIAMETER TUBE

## **WGSBLB184**

7-1/4" SB Lifting Bracket

8.80 kgs / 19.4 lbs



### **APPLICATIONS:**

USED WITH THE GANGED WALL FORM SYSTEMS AS A LIFTING LUG. USED WITH THE 184MM (7.25") STRONGBACK UNITS, IN THE VERTICAL POSITION. SHIPPED COMPLETE WITH CONNECTING BOLTS, AND SHACKLE.

**CAPACITY:** 13kN (3000 lbs.)

## **WGSLB2**

6" SB Lifting Bracket

7.60 kgs / 16.8 lbs



### **APPLICATIONS:**

USED WITH THE GANGED WALL FORM SYSTEMS AS A LIFTING LUG. USED WITH THE 152MM (6") STRONGBACK UNITS, IN THE VERTICAL POSITION. SHIPPED COMPLETE WITH CONNECTING BOLTS, AND SHACKLE.

**CAPACITY:** 13kN (3000 lbs.)

## **WGSBLB152**

6" SB Lifting Bracket  
6.85 kgs / 15.1 lbs



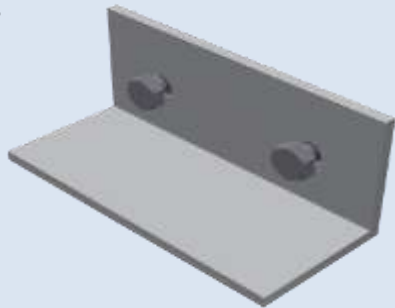
### **APPLICATIONS:**

USED WITH SMALL GANGED PANELS IN APPLICATIONS WHERE BEAMS ARE USED VERTICALLY. THE BRACKET IS BOLTED TO THE WEB OF THE BEAM USING TWO 12MM (1/2") DIAMETER BOLTS. AVAILABLE FOR 165MM AND 140MM BEAMS.

**CAPACITY:** 7kN (1500 lbs.)

## **WGSBFR**

7-1/4" Strongback  
Foot Rest Aluminum  
1.63 kgs / 3.6 lbs

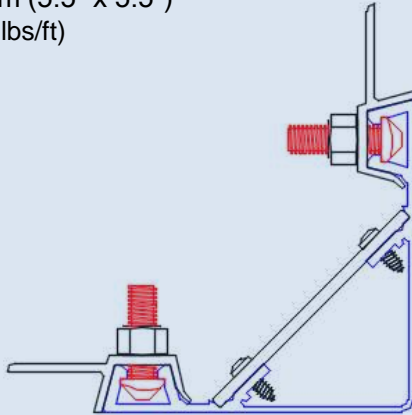


## **AEWASCS**

### **ALUMINUM INSIDE STRIPING CORNER**

140mm x 140mm (5.5" x 5.5")

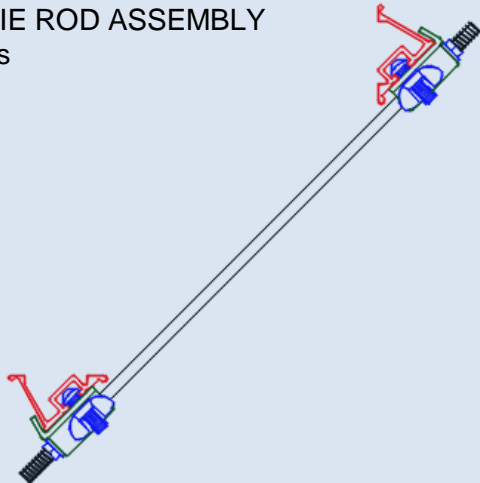
7.3 kgs/m (4.9 lbs/ft)



## **WMCTA**

### **CORNER TIE ROD ASSEMBLY**

8 kgs / 18 lbs



## **COMPONENTS:**

90 DEGREE ALUMINUM CORNER SECTION C/W SIDE STRIPPING SECTIONS AND HARDWARE.

## **APPLICATIONS:**

USED WITH ANY WALL FORM SYSTEMS USING 17.5mm (11/16") PLYWOOD TO FORM AN INSIDE CORNER. THE SIDE STRIPPING SECTIONS ARE SECURED TO THE PLYWOOD USING SCREWS AT 152mm (6") ON CENTER AS WELL AS 8mm (5/16") DIAMETER CARRIAGE BOLTS AT ONE METER (39") CENTERS. STRIPPING UNITS ARE T-BOLTED TO THE CORNER AT 610mm (24") ON CENTER

## **COMPONENTS:**

CORNER TIE ROD BRACKETS C/W T-BOLTS  
COIL THREAD TIE ROD C/W NUTS AND WASHERS, 12mm (1/2") DIAMETER.

## **APPLICATIONS:**

USED TO TIE TOGETHER TWO ALUMINUM OUTSIDE CORNER STRONGBACKS ON GANGED WALL FORM TO FORM A 90 DEGREE OUTSIDE CORNER.

CORNER TIE ROD BRACKETS AND TIE RODS ARE CONNECTED TO THE CORNER STRONGBACK AT A SPACING OF 610mm (2'-0") MAX.



**Sales and Manufacturing Facilities**

**HI-LITE SYSTEMS / JASCO SALES INC**  
 Mississauga, Ontario, Canada  
 +1-905-677-4032

**TARGET HI-LITE**  
 Abu Dhabi, United Arab Emirates  
 +971-2-6727452

**SHOR-SCAF USA INC.**  
 Las Vegas, Nevada, U.S.A.

**HI-LITE CHINA**  
 Tianjin, China

**HI-LITE INDIA**  
 Chennai, India

Supported by five regional offices.  
 Hi-Lite products are utilized by contractors in over thirty countries around the world.

**Experience**  
 the Hi-Lite Advantage.

# Experience

## the Hi-Lite Advantage.

Call 1-877-HILITE-1 (1-877-445-4831) to request a demonstration of our Hi-Lite Aluminum Systems.

**Hi-Lite Systems  
International Inc.**

1680 Bonhill Road  
Mississauga, Ontario  
Canada L5T 1C8

Tel: 1-905-677-4032

Toll-free: 1-877-HILITE-1 [North America]  
(1-877-445-4831)

Fax: 1-905-677-4542

Web Site: [www.hi-lite-systems.com](http://www.hi-lite-systems.com)

E-mail: [hilite@hi-lite-systems.com](mailto:hilite@hi-lite-systems.com)

