

Experience



the Hi-Lite Advantage

STEEL POST SHORING

March 2017



TABLE OF CONTENTS

Introduction	3
Features & Benefits - HGPS Steel Post Shores	4
Capacity	5
Storage & Shipping	7
Parts	A1



INTRODUCTION



The Steel Post Shores are primarily used in light construction applications and re-shoring. (Consult with Hi-Lite Engineering for design)

This manual is published primarily for our customers, shoring designers and erectors of our shoring system. It is intended only as a guide and should be used in conjunction with “generally accepted shoring design and safety regulations” in effect within the area and country of use.

The purpose of this manual is to simplify the understanding and use of the product. Each component of the Steel Post Shores is described and illustrated. The features and benefits of using the Hi-Lite Steel Post Shores are outlined in depth and key elements are cross referenced to particular components.

Local authorities and/or a locally registered Professional Engineer should approve all drawing for construction purposes.

Barry & Dave Jackson

JASCO SALES INC. / HI-LITE SYSTEMS



HGPS – FEATURES

150mm x 150mm Base / Top Plate (6in x 6in).

5mm (1/4in) steel plate including connection / alignment holes for adapting to u-heads, beams and other common post-shore applications.

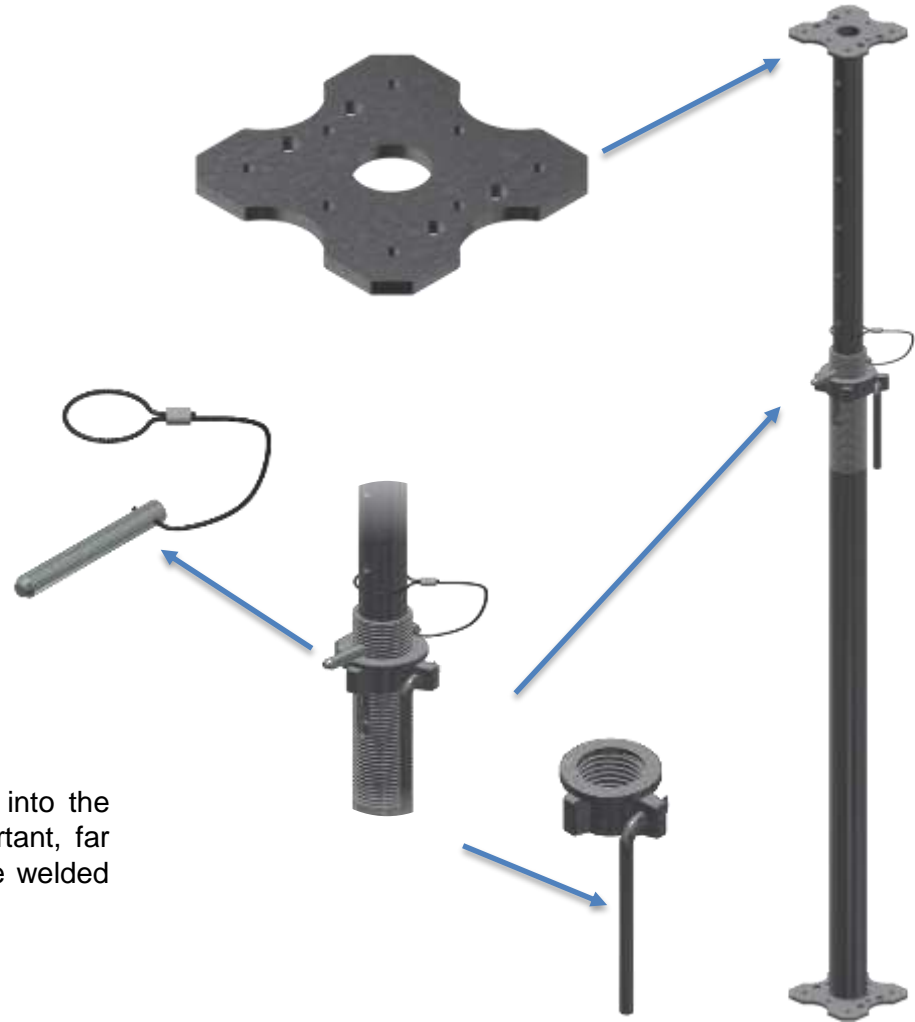
Heavy Duty Cast Hammer Nut

Combined with stripping Handle, the Nut has 3 Additional Ears for use with hammers to ease in stripping the shore while under load.

Pins are of high grade steel, and come with attached safety cable to prevent loss of pins during transportation or on site handling.

Full length Tube / Thread

Outer Tube is full length and continuous. Thread is cut into the outer tube providing a higher capacity, and equally important, far longer life expectancy when compared to products that are welded onto thinner walled tubes to reduce weight and cost.



Hi-Lite's "Premium" Steel Post Shores are made of hi quality steel tubes and accessories which are galvanized to ensure many years of repeated use. Ideal of long term ownership and maximum stripping performance due to its labor saving "quick" release pin, making significant savings in the time to set, and strip the shore.

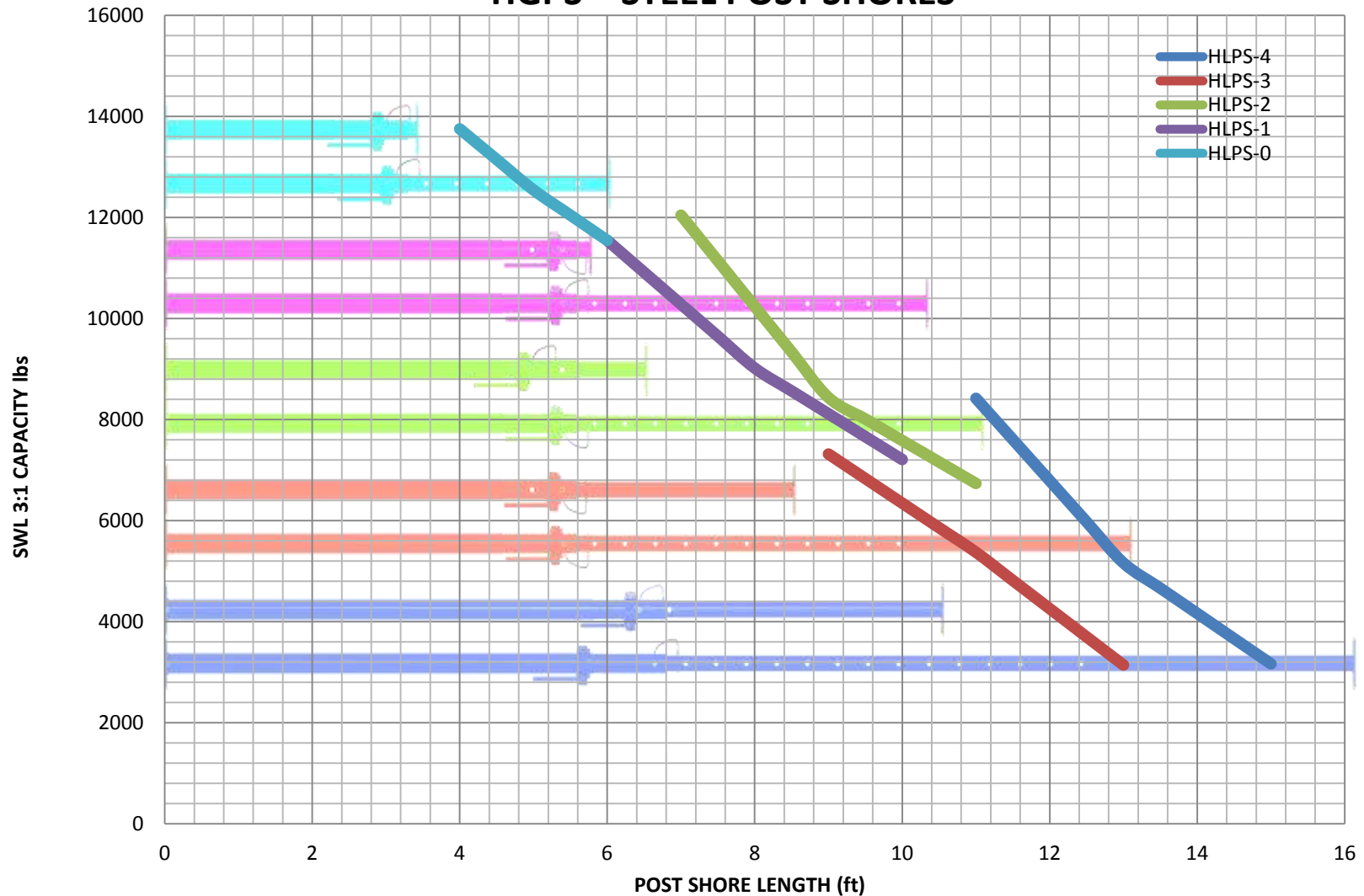


HI-LITE GALVANIZED STEEL POST SHORE TESTED DATA

	MIN	SWL 3:1	MAX	SWL 3:1	RANGE	WEIGHT
HPS-0	3'-6"	13,746 lbs	6'	11,546 lbs	2'-6"	29.1 lbs
	1.07 m	61.14 kN	1.83 m	51.36 kN	0.76 m	13.2 kgs
HPS-1	5'-9"	11,546 lbs	10'-3"	7,209 lbs	4'-6"	46.08 lbs
	1.75 m	51.36 kN	3.12 m	32.07 kN	1.37 m	20.9 kgs
HPS-2	6'-6"	12,043 lbs	11'	6,734 lbs	4'-6"	48.06 lbs
	1.98 m	53.57 kN	3.35 m	29.95 kN	1.37 m	21.8 kgs
HPS-3	8'-6"	7,317 lbs	13'	3,141 lbs	4'-6"	54.01 lbs
	2.59 m	32.55 kN	3.96 m	13.97 kN	1.37 m	24.5 kgs
HPS-4	10'-6"	8,419 lbs	16'	2,968 lbs	5'-6"	63.93 lbs
	3.20 m	37.45 kN	4.88 m	13.20 kN	1.68 m	29.0 kgs

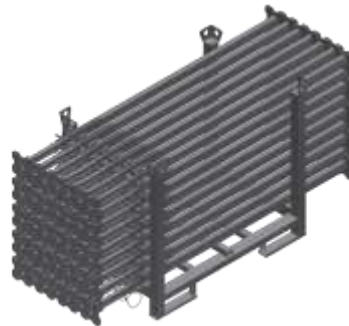


HGPS – STEEL POST SHORES



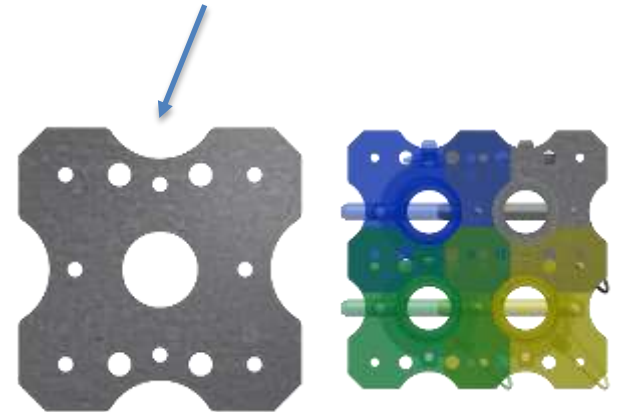


HPS – STORAGE & SHIPPING



Notched Stacking

Greater concentration of Post Shores can be placed into Shopping Cradles due to the notch on the base plates that allow for stable and closer packing of shores.



Shipping Cradle

Easy transportation for shipping Post Shores by track, or lifting to the working deck for installation and stripping.

Racks are designed to hold 63 Post Shores.

Racks can be safely stacked 2 or 3 high providing surface is level, and hard packed.



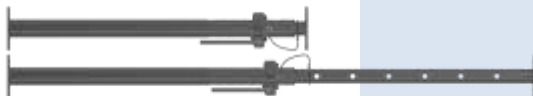
HGPS - PARTS

HGPS-0

Steel Post Shore 0

1.2m – 1.8m / 4' – 6'

13.15 kgs / 29 lbs



HGPS-1

Steel Post Shore 1

1.8m – 3.0m / 6' – 9'10"

20.87 kgs / 46 lbs



HGPS-2

Steel Post Shore 2

2.1m – 3.3m / 7' – 11'

21.77 kgs / 48 lbs



HGPS-3

Steel Post Shore 3

2.7m – 3.9m / 9' – 13'

24.49 kgs / 54 lbs



HGPS-4

Steel Post Shore 4

3.3m – 4.5m / 11' – 15'

29.03 kgs / 64 lbs





Sales and Manufacturing Facilities

HI-LITE SYSTEMS / JASCO SALES INC
Mississauga, Ontario, Canada
+1-905-677-4032

TARGET HI-LITE
Abu Dhabi, United Arab Emirates
+971-2-6727452

SHOR-SCAF USA INC.
Las Vegas, Nevada, U.S.A.

HI-LITE CHINA
Tianjin, China

HI-LITE INDIA
Chennai, India

Supported by five regional offices.

Hi-Lite products are utilized by contractors in over thirty countries around the world.

Experience

the Hi-Lite Advantage.

Experience

the Hi-Lite Advantage.

Call 1-877-HILITE-1 (1-877-445-4831) to request a demonstration of our Hi-Lite Aluminum Systems.

**Hi-Lite Systems
International Inc.**

1680 Bonhill Road
Mississauga, Ontario
Canada L5T 1C8

Tel: 1-905-677-4032

Toll-free: 1-877-HILITE-1 [North America]
(1-877-445-4831)

Fax: 1-905-677-4542

Web Site: www.hi-lite-systems.com

E-mail: hilite@hi-lite-systems.com

